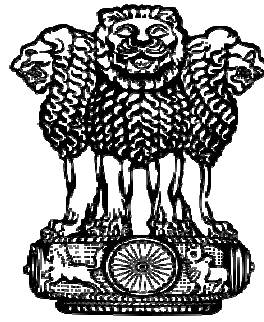
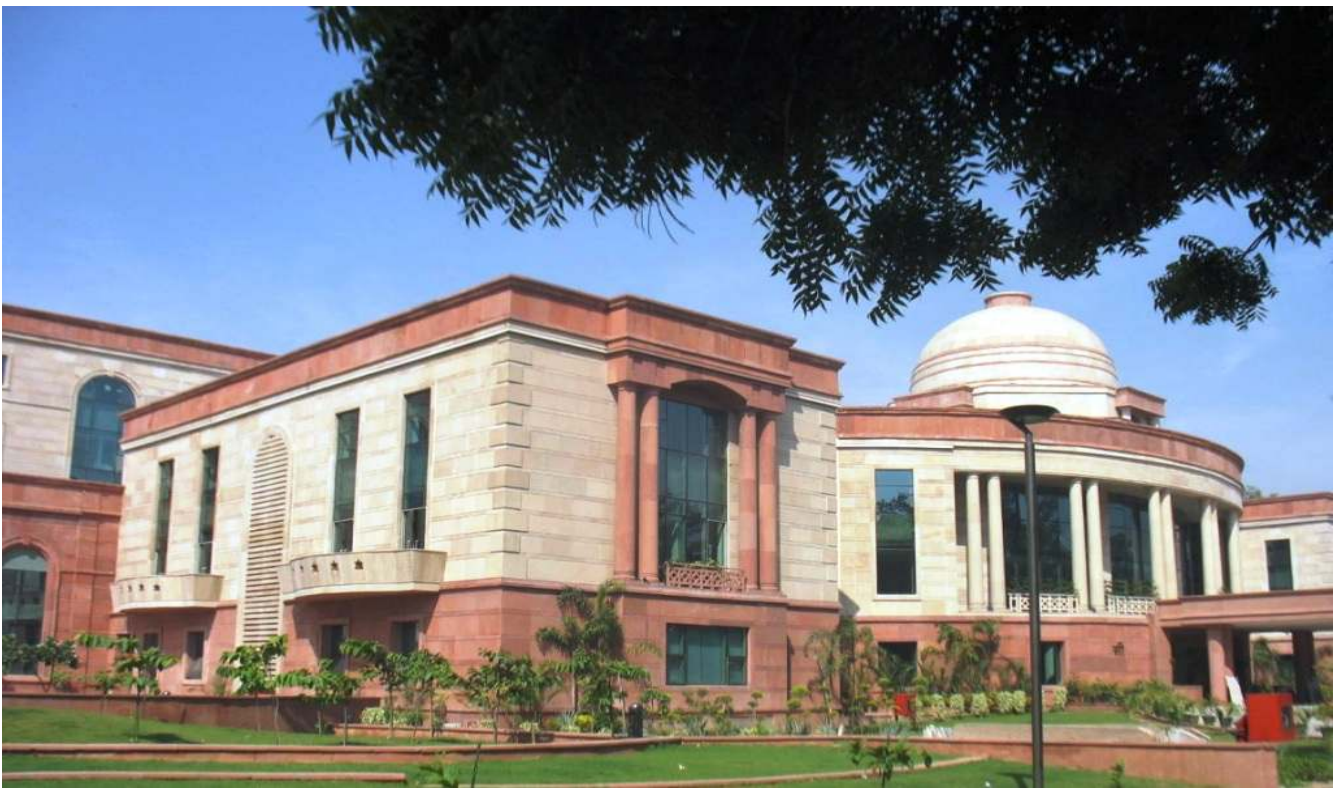


FOR OFFICIAL USE ONLY



सत्यमेव जयते



## **ACCOUNTS AT A GLANCE 2016-2017**

**GOVERNMENT OF INDIA  
MINISTRY OF EXTERNAL AFFAIRS  
PRINCIPAL CHIEF CONTROLLER OF ACCOUNTS  
JAWAHARLAL NEHRU BHAWAN  
JANPATH, NEW DELHI-110011**

# Preface

---

It gives me great pleasure to present the 21<sup>st</sup> issue of 'Accounts at a Glance' for the Ministry of External Affairs for the year 2016-2017.

This publication has been framed with the purpose to furnish a prominent summary of the accounts of the Ministry. It provides detailed, significant and purposive accounting information in simple formats so that an exhaustive picture of the wherewithal of this Ministry may be accomplished by the reader in a single document.

This document has been presented in a simple and abridged form with the help of statements and graphs based on the information from Appropriation Accounts, Finance Accounts and Statement of Central Transactions which have been submitted to the Controller General of Accounts, Department of Expenditure, Ministry of Finance.

I trust that the information contained in this issue will be useful in understanding the accounting trends and finances of this Ministry.

We look forward to suggestions that will help us in improving the form and content of future publications.

**(MS. L. N. TOCHHAWNG)**  
**Principal Chief Controller of Accounts**  
**Ministry of External Affairs**

**New Delhi**  
**February, 2018**

# CONTENTS

---

<b>Chapter</b>	<b>Page No.</b>
1. Summary	1-2
2. Introduction	3-7
3. Accounting Organisation of Ministry of External Affairs	8-11
4.. Accounts Highlights	12-13
5. Receipt Analysis	14-16
6. Expenditure Analysis	17-33
7. Receipt & Expenditure of Missions	34-38
8. Internal Audit	39-51

---

## CHAPTER – 1

# SUMMARY

### Fund flow statement for the year 2016-17: (from Consolidated Fund of India)

*(Rs. in Crore)*

Receipts (Cr)	Amount	Disbursements (Dr)	Amount
<b>Consolidated Fund of India</b>		<b>Consolidated Fund of India</b>	
<b>Revenue</b>	<b>5362.63</b>	<b>Revenue</b>	<b>11159.50</b>
Interest Receipts	159.56	2052-Sectt. Gen. Services	378.75
Passport Fees	2285.85	2061-External Affairs	6280.50
		3605-Tech. & Economic Cooperation with Other Countries	4500.25
Visa Fees	2018.04		
Other Receipts	716.98	<b>Capital</b>	<b>1613.12</b>
Misc. General Services	182.20	4059-Public Works	224.52
<b>Capital</b>	<b>298.56</b>	4216-Housing	107.03
Loan Recoveries	298.56	7605-Advances to Foreign Governments	1281.57
<b>TOTAL (CFI)</b>	<b>5661.19</b>	<b>TOTAL (CFI)</b>	<b>13217.76</b>

*(Source: Statement of Central Transactions)*

### Key Highlights of Receipts and Expenditure Trends:

#### Receipts:-

- There was an increase of Rs.306.13 Crores (5.72%) over the receipts of previous year.
- Under Revenue Section, there was an increase of Rs. 319.60 Crores (6.34%) over previous year. This was mainly due to increase in receipts on account of Passport Fee, Visa Fee, Other Receipts and Misc. General Services.
- Under Capital Section, there was a decrease of Rs. 13.47 Crores (4.32%) over previous year. The decrease is mainly due to less recovery of loans from Govt. of Bhutan. Year-wise details of such recoveries is as under:-

<b>Year wise recovery of Loan from Govt. of Bhutan</b>		
<b>2014-15</b>	<b>2015-16</b>	<b>2016-17</b>
452.93	152.93	134.26

\*Refer details of total receipts at page 14.

**Expenditure:-**

- The Budget (Budget Estimates) of Rs.15262.69 crores for the F.Y 2016-17 comprised of Rs.12279.69 crores under the Revenue Section and Rs.2983.00 crores under the Capital Section including supplementary grant of Rs.600.03 crores in Revenue Section.
- Expenditure of Rs.12772.62 crores was incurred out of which 11159.50 crores pertained to the Revenue Section and Rs.1613.12 crores pertained to the Capital Section of accounts. This included revenue expenditure of Rs. 191.97 crores and capital expenditure of Rs. 19.87 crores incurred by other Ministries (on behalf of MEA) as agents.
- There was a surrender of Rs. 1836.69 Crores and a further savings of Rs. 653.38 crores out of total Budget during the F.Y. 2016-17.
- The overall budgetary utilization during FY 2014-15 to 2016-17 was as under:-

F.Y.	Percentage of Utilization of Budget (Budget Estimates)		
	Total	Capital	Revenue
2014-15	82.47	65.98	87.55
2015-16	96.64	90.53	98.66
2016-17	83.69	54.08	90.88

## CHAPTER – 2

# INTRODUCTION

The Ministry of External Affairs is responsible for the conduct of foreign relations of India. It is also responsible for the country's representation in the United Nations. It advises other Ministries and State Governments when the latter have dealings with foreign governments or institutions. The Ministry is also dedicated to the multitude of Indian nationals settled out of India and provides information, partnerships and facilitations for all matters related to Overseas Indians, Non-Resident Indian and Person of Indian Origin.

The Ministry is headquartered at New Delhi and is assisted by its 181 Missions/Posts abroad, 37 Passport Offices and 4 Branch Secretariats in India and Autonomous Bodies funded by it.

The Ministry is sponsoring the annual Pravasi Bharatiya Divas (Non-resident Indian Day) established in 2003, and also instituted the annual Pravasi Bharatiya Samman Award.

The Ministry has the following three main divisions viz., (i) Support Divisions (ii) Territorial Divisions and (iii) Specialized Divisions.

### **A. SUPPORT DIVISIONS**

1. Administration
2. BOS (Bureau of Security)
3. CNV & I Division (Cypher, NGO, Vigilance & Inspection)
4. e-Governance & IT (Information Technology)
5. Establishment
6. Finance
7. L & T (Legal & Treaties)
8. Office of the Principal Chief Controller of Accounts
9. Protocol

### **B. TERRITORIAL DIVISIONS**

1. AMS (Americas)
2. BM (Bangladesh & Myanmar)
3. Central Europe
4. EA (East Asia)
5. East & Southern Africa

6. Eurasia
7. Europe West
8. Gulf
9. Indian Ocean Region
10. LAC (Latin America & Caribbean)
11. Northern (Nepal & Bhutan)
12. PAI (Pakistan, Afghanistan & Iran)
13. Southern Division
14. Western Africa (WA)
15. WANA (West Asia & North Africa)

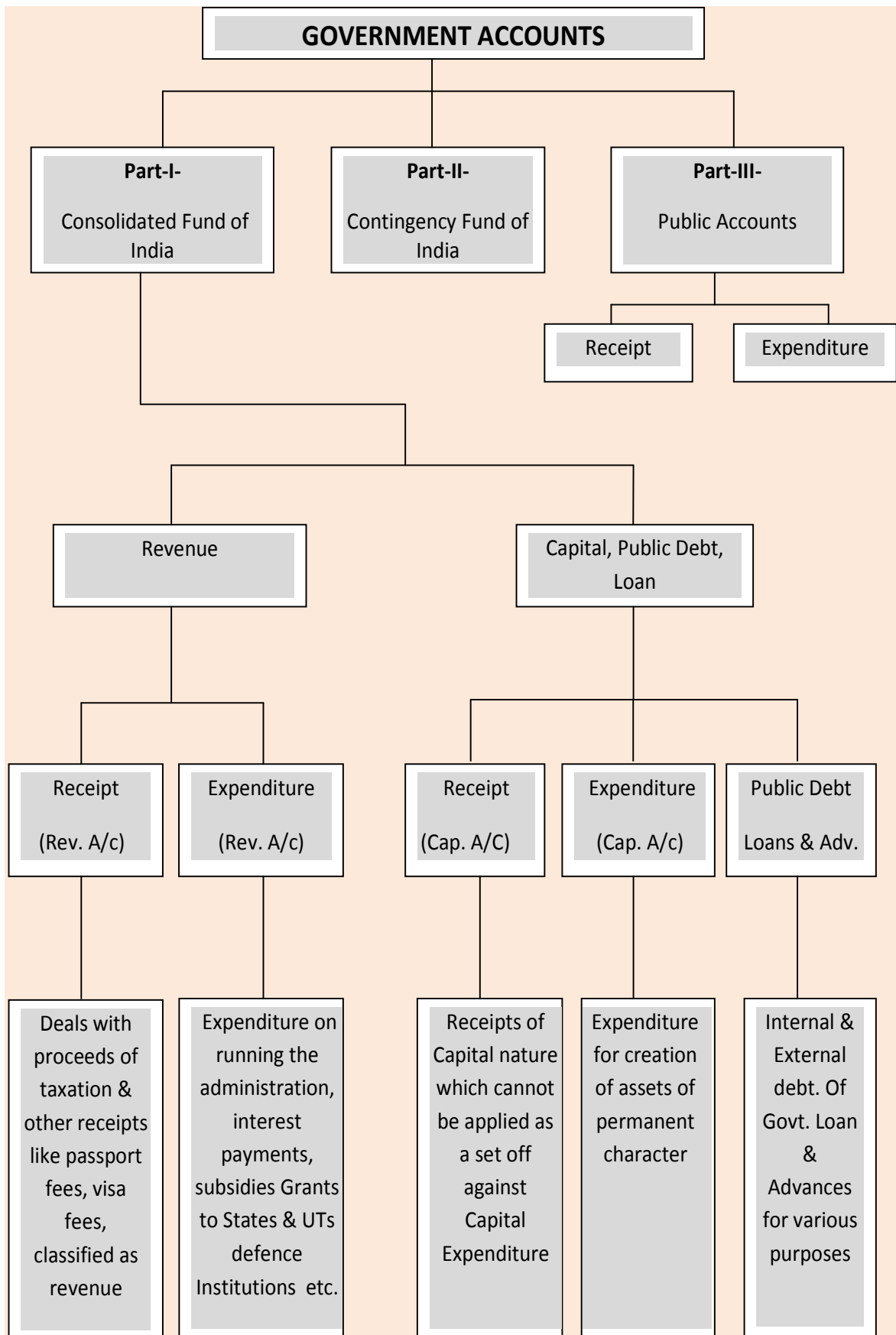
**C. SPECIALISED DIVISIONS**

1. Archives & Records Management (A & RM)
2. ASEAN Multilateral
3. Boundary Cell
4. Central Registry
5. Complaint Committee of MEA against Sexual Harassment
6. Conference Secretariat
7. Counter Terrorism (CT) Cell
8. CPV (Consular, Passport & Visa)
9. Cyber Diplomacy
10. Development Partnership Administration (DPA-I)
11. Development Partnership Administration (DPA-II)
12. Development Partnership Administration (DPA-III)
13. D & ISA (Disarmament & International Security Affairs)
14. Economic Diplomacy
15. External Publicity & Public Diplomacy (XPD)
16. Global Estate Management (GEM)
17. Hindi & Sanskrit
18. India-ASEAN Summit Secretariat
19. Liaison officer for Scheduled Caste/Scheduled Tribe/Persons with Disabilities of the Ministry
20. Liaison officer for Other Backward Caste of the Ministry
21. MEA Library
22. MER (Multilateral Economic Relations)
23. Nalanda

24. Overseas Indian Affairs (OIA)-I
25. Overseas Indian Affairs (OIA)-II
26. Overseas Employments & Protectorate General of Emigrants (OE & PG)
27. Parliament & Co-ordination
28. PP & R (Policy Planning & Research)
29. Pravasi Bhartiya Kendra (PBK)
30. Right to Information (RTI)
31. SB & BC
32. Shanghai Cooperation Organisation
33. States
34. Special Kuwait Cell
35. Translation and Interpretation
36. United Nations (UN)
37. United Nations Economic & Social (UNES)
38. United Nations Political (UNP)
39. Welfare
40. World Hindi Conference Secretariat (WHCS)

The staff strength of the Ministry in 2016 was 10856 (Sanctioned) and 9294 (in position). The Office of the Pr. Chief Controller of Accounts has total sanctioned staff strength of 150 (in position 120).







## CHAPTER-3

# ACCOUNTING ORGANISATION OF MINISTRY OF EXTERNAL AFFAIRS

The Foreign Secretary is the Chief Accounting Authority in the Ministry of External Affairs. He discharges his functions with the assistance of Additional Secretary (Financial Adviser) and the Pr. Chief Controller of Accounts (**Exhibit 'A'**)

The Accounts Organization of the Ministry is headed by the Pr. Chief Controller of Accounts. He performs his duties with the assistance of one Controller of Accounts and six Senior Accounts Officers amongst other staff. The distribution of work in the Office of Pr. Chief Controller of Accounts is given at **Exhibit 'A'**.

There are 181 Indian diplomatic Missions/Posts abroad and 37 Passport Offices in India functioning as cheque drawing DDOs (CDDOs). These CDDOs are authorised to make certain types of payments by issue of cheques and deposit money received/ collected on behalf of the government into the approved branches of accredited banks. The Regional Passport Offices located outside Delhi send their weekly lists of Receipts and Payments and all Indian Missions/Posts abroad submit their monthly Cash Accounts to the Pr. Chief Controller of Accounts. The monthly account for the entire Ministry is consolidated by the 15<sup>th</sup> of the following month and presented to the Controller General of Accounts in the Ministry of Finance.

The non-cheque drawing DDOs at Headquarters submit bills to the Pay and Accounts Office under pre-check system of payment. Accounting information Flow chart is given at **Exhibit 'B'**.

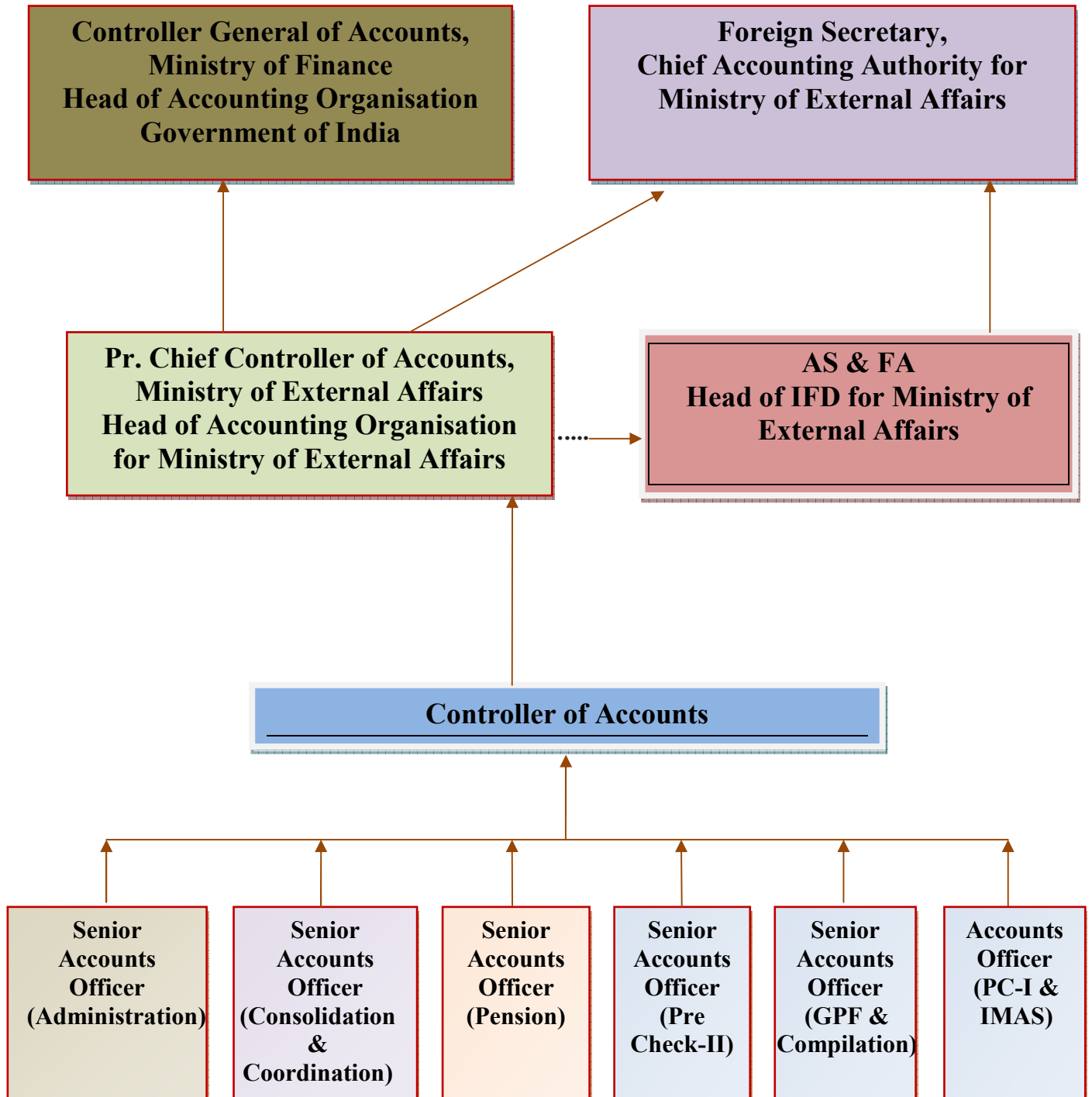
At the close of the financial year, annual accounts viz., Statement of Central Transactions, Appropriation Accounts and Finance Accounts are prepared and submitted to the offices of Director General of Audit, Central Revenues and Controller General of Accounts, Ministry of Finance. The Annual Accounts viz., Union Government Finance Accounts and Appropriation Accounts of Union Government (Civil) compiled by the Controller General of Accounts are presented to Parliament along with the Audit Report of Comptroller and Auditor General of India.

Accounting information and data are also provided to the Ministry to facilitate effective budgetary and financial control. Monthly and progressive expenditure figures under various subheads of the grant of the Ministry of External Affairs are furnished to Budget Section. Progress of expenditure against budget provisions are also submitted monthly to Foreign Secretary, Additional Secretary (Financial Adviser) as well as Heads of Divisions of the Ministry controlling the grant for purposes of better monitoring of expenditure.

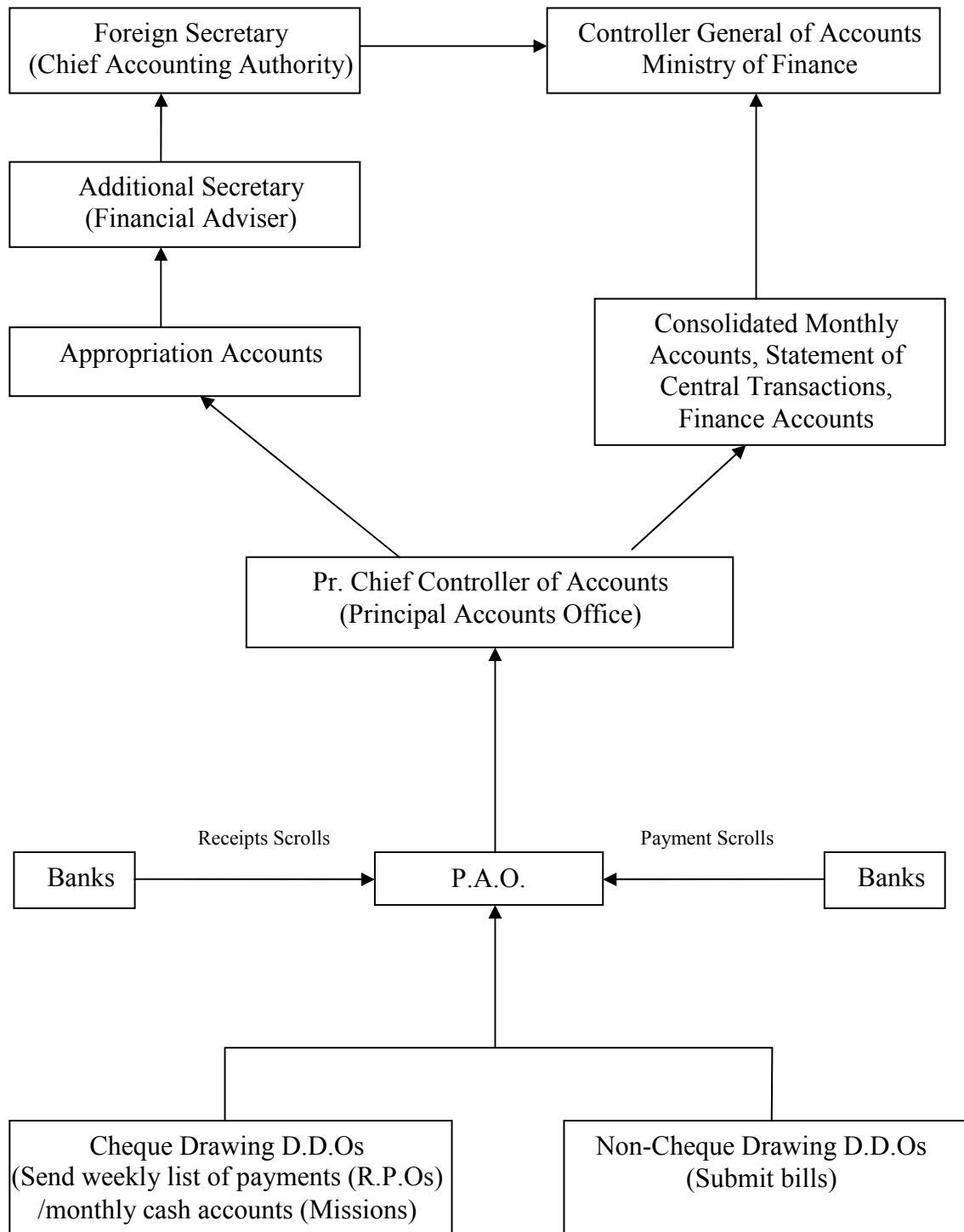
The Accounting organisation also maintains accounts of long-term advances such as House Building Advance and Motor Car Advance and GPF accounts of employees of the Ministry.

The verification and authorisation of pensionary entitlement of officers and staff members is done by the Office of the Pr. Chief Controller of Accounts on the basis of service particulars and pension papers furnished by Heads of Offices. All retirement benefits and payments like gratuity, cash equivalent of leave salary as well as payments under Central Government Employees Group Insurance Scheme, General Provident Fund etc. are released by Pr. CCA's office on receipt of relevant information/bills from DDOs.

## ORGANISATIONAL CHART



**Flow of Accounting Information**



## CHAPTER – 4

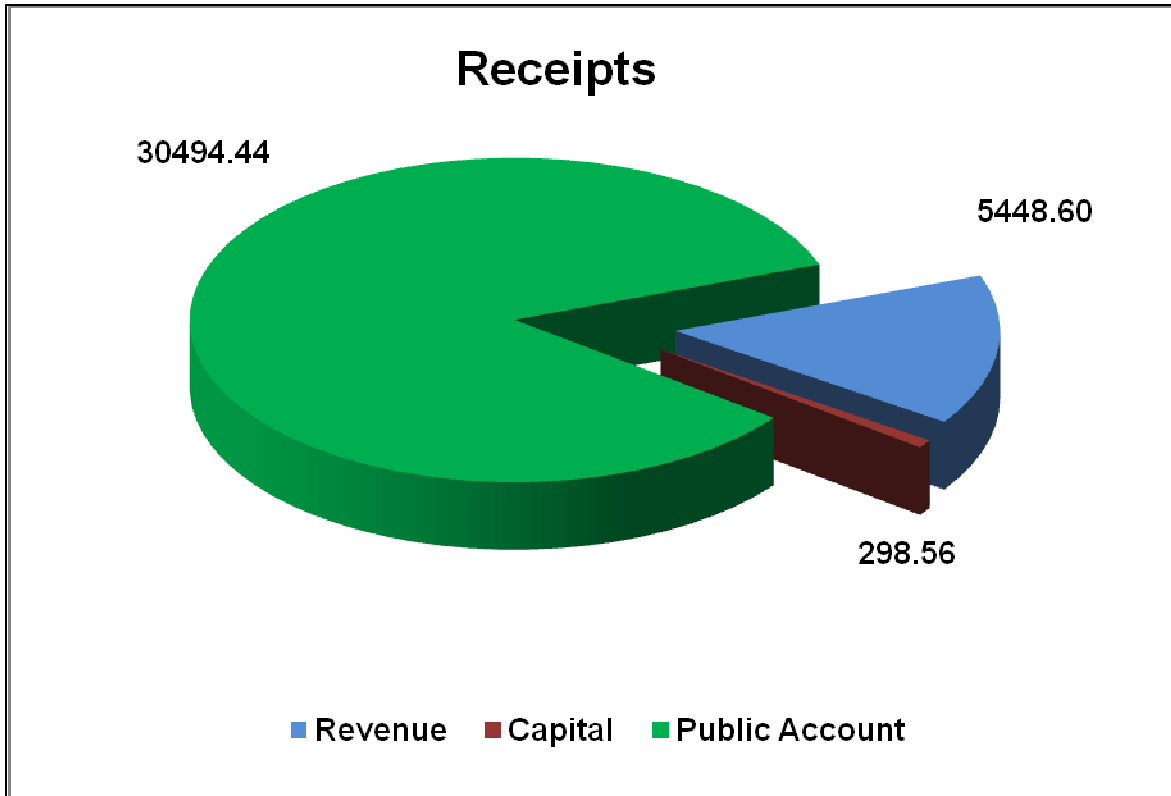
**ACCOUNTS HIGHLIGHTS****Fund Flow Statement for the year 2016-17***(Rs. in Crore)*

<b>Receipts (Cr)</b>	<b>Amount</b>	<b>Disbursements (Dr)</b>	<b>Amount</b>
<b>Consolidated Fund of India</b>		<b>Consolidated Fund of India</b>	
<b>Revenue</b>	<b>5448.60</b>	<b>Revenue</b>	<b>11624.32</b>
Tax Revenue	84.15	General Services	7028.06
Interest Receipts	159.56	Social Services	40.22
Other Non-Tax Revenue	5204.89	Economic Services	224.76
		Grants in Aid and Contribution	4331.28
<b>Capital</b>	<b>298.56</b>	<b>Capital</b>	<b>1593.44</b>
Loan Recoveries	298.56	General Services	205.58
		Social Services	106.08
		Economic Services	0.00
		Loans and Advances	1281.78
<b>TOTAL (CFI)</b>	<b>5747.16</b>	<b>TOTAL (CFI)</b>	<b>13217.76</b>
<b>Public Accounts</b>		<b>Public Account</b>	
Small Savings and Provident Funds etc.	146.86	Small Savings and Provident Funds etc.	72.30
Deposits and Advances	218.30	Deposits and Advances	216.98
Suspense and Misc	30134.52	Suspense and Misc	19870.60
Remittances	-5.24	Remittances	2863.96
<b>TOTAL(PUBLIC ACCOUNTS)</b>	<b>30494.44</b>	<b>TOTAL (PUBLIC ACCOUNTS)</b>	<b>23023.84</b>
<b>TOTAL RECEIPTS</b>	<b>36241.60</b>	<b>TOTAL DISBURSEMENTS</b>	<b>36241.60</b>

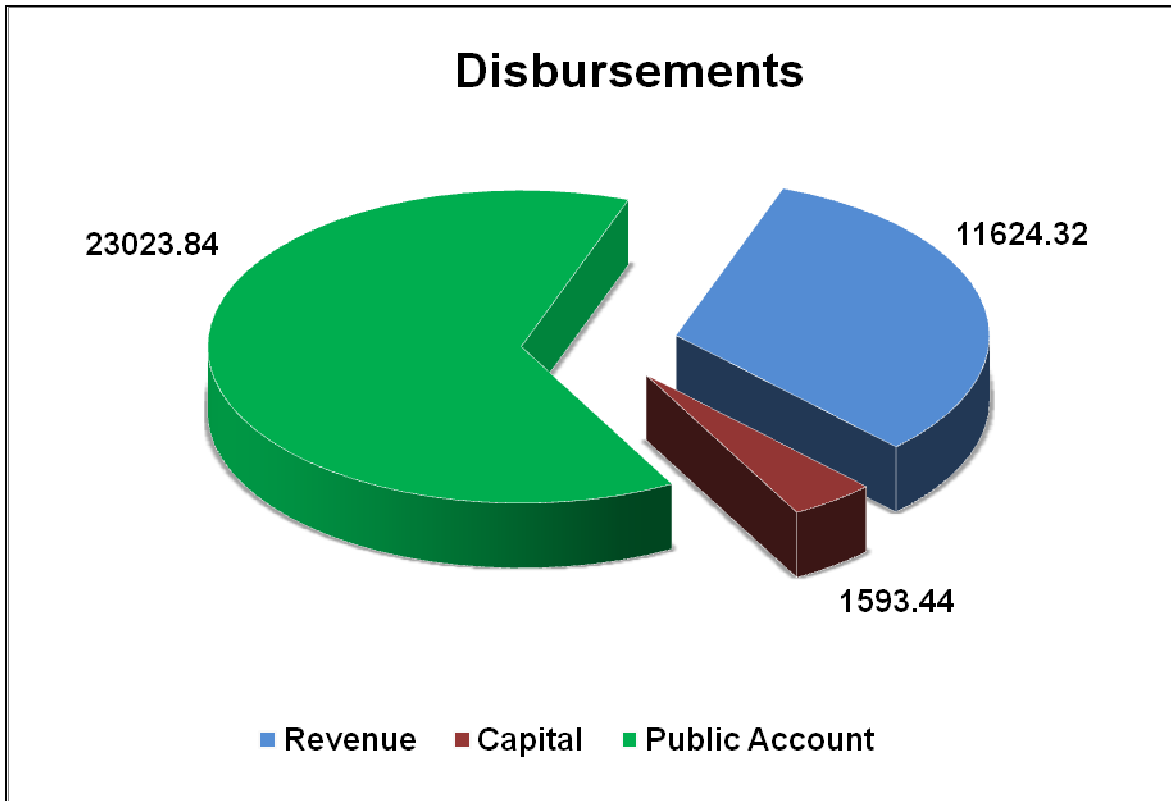
*(Source: Statement of Central Transactions 2016-2017)*

**RECEIPTS AND DISBURSEMENT OF FUNDS**  
**(2016-2017)**

*(Rs. in Crore)*



*(Rs. in Crore)*





## CHAPTER – 5

### RECEIPT ANALYSIS

**2016-2017**

The total receipt of Ministry of External Affairs in the Consolidated Fund of India during the year 2016-2017 was Rs.5747.16 crores of which Rs.5448.60 crores was in the form of Revenue Receipts and Rs.298.56 crores in the form of Capital Receipts.

*(Rs. in Crore)*

S. No	Item	Amount
1	Tax Revenue	84.15
2	Non Tax Revenue	5364.45
3	<b>Total Revenue Receipts (1+2)</b>	<b>5448.60</b>
4	Loan Repayment from Foreign Govts.	298.00
5	Loans Repayment from Govt. Servants etc.	0.56
6	<b>Total Capital Receipts (4+5)</b>	<b>298.56</b>
7	<b>Total Receipts (3+6)</b>	<b>5747.16</b>

The total revenue receipt comprised Rs.84.15 crores Tax Revenue and Rs.5364.45 crores Non-Tax Revenue. The contributors to revenue receipts were the following:

*(Rs. in Crore)*

S. No.	Major Head of Accounts	Amount
1	<b>0021 Taxes on Income other than Corporation Tax</b>	<b>84.15</b>
2	<b>0049 Interest Receipts</b>	<b>159.56</b>
3	<b>0070 Other Administrative Services</b>	<b>5020.87</b>
4	<b>0071 Contributions &amp; Recoveries towards Pension and other Retirement Benefits</b>	<b>0.10</b>
5	<b>0075 Misc. General Services- Gain by Exchange</b>	<b>182.20</b>
6	<b>0210 -Medical and Public Health</b>	<b>1.08</b>
7	<b>0216- Housing</b>	<b>0.64</b>
	<b>Total</b>	<b>5448.60</b>

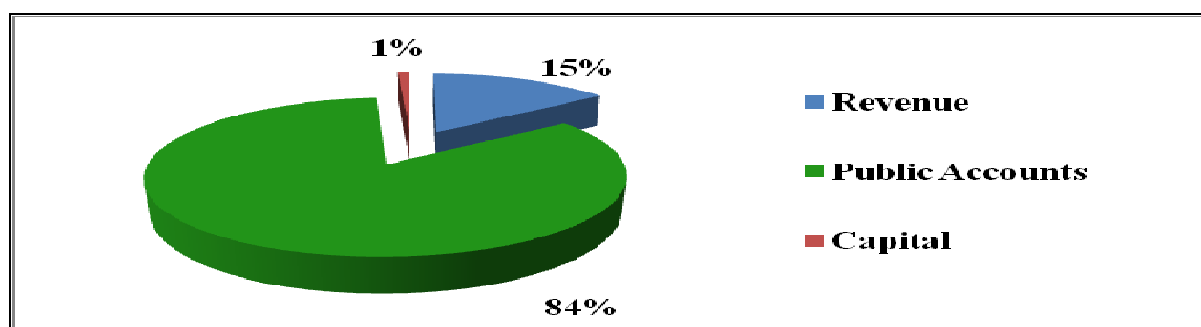
## DETAILS OF TOTAL RECEIPTS

(Rs in Crore)

	2014-15	2015-16	2016-17
<b>REVENUE</b>			
<b>Tax Revenue</b>			
Taxes on Income other than Corporation Tax (Income Tax)	42.84	58.91	84.15
<b>Non Tax Revenue</b>			
Interest Receipts	199.02	183.53	159.56
Passport Fees	2167.07	2240.42	2285.85
Visa Fees	1884.70	1890.82	2018.04
Other Receipts	645.42	684.34	716.98
Contributions & Recoveries towards Pension and other Retirement Benefits	0.15	0.19	0.10
Misc. General Services	6.18	43.92	182.20
Medical and Public Health	0.90	0.92	1.08
Housing	0.61	0.63	0.64
<b>Total Non Tax Revenue</b>	4904.05	5044.77	5364.45
<b>Total Revenue</b>	<b>4946.89</b>	<b>5103.68</b>	<b>5448.60</b>
<b>Percentage increase over previous year</b>	4.01	3.17	6.76
<b>CAPITAL</b>			
<b>Loan Recoveries</b>			
Foreign Governments	610.18	311.55	298.00
Government Servants	0.61	0.48	0.56
<b>Total Loan Recoveries</b>	610.79	312.03	298.56
<b>Total Capital</b>	610.79	312.03	298.56
<b>Percentage increase/decrease over previous year</b>	219.08	-48.91%	-4.32%
<b>Total Consolidated Fund</b>	<b>5557.68</b>	<b>5415.71</b>	<b>5747.16</b>
<b>Total Public Account</b>	<b>25826.15</b>	<b>29473.58</b>	<b>30494.44</b>
<b>Grand Total</b>	<b>31383.83</b>	<b>34889.29</b>	<b>36241.60</b>

**TREND ANALYSIS:** The total receipt of the Ministry during the year 2016-17 was Rs.5747.16 crores. There was an increase of Rs.331.45 crores over the receipts of previous year. This was mainly due to increase in receipts on account of Passport Fee, Visa Fee, Other Receipts and Misc. General Services.

Break up of Total receipts:



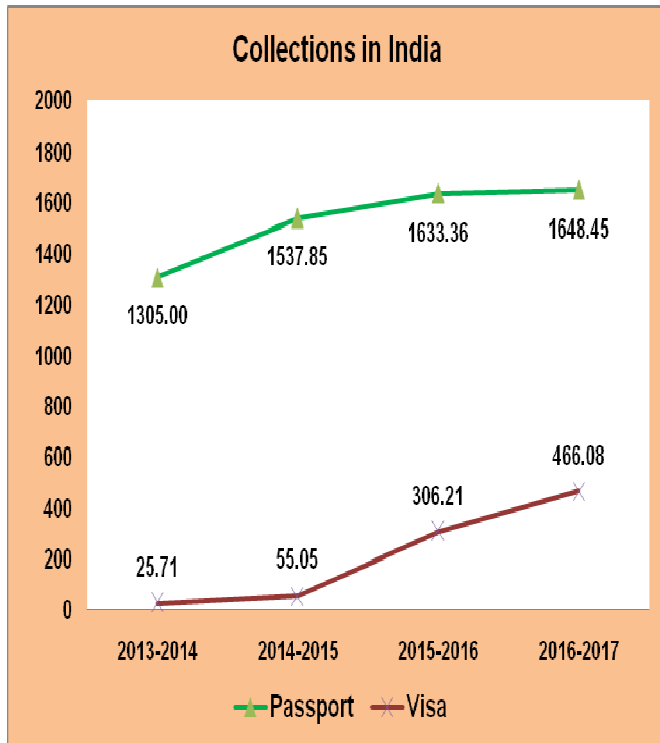
**RECEIPTS ON ACCOUNT OF PASSPORT AND VISA FEES IN INDIA AND ABROAD**

*(Rs. in Crore)*

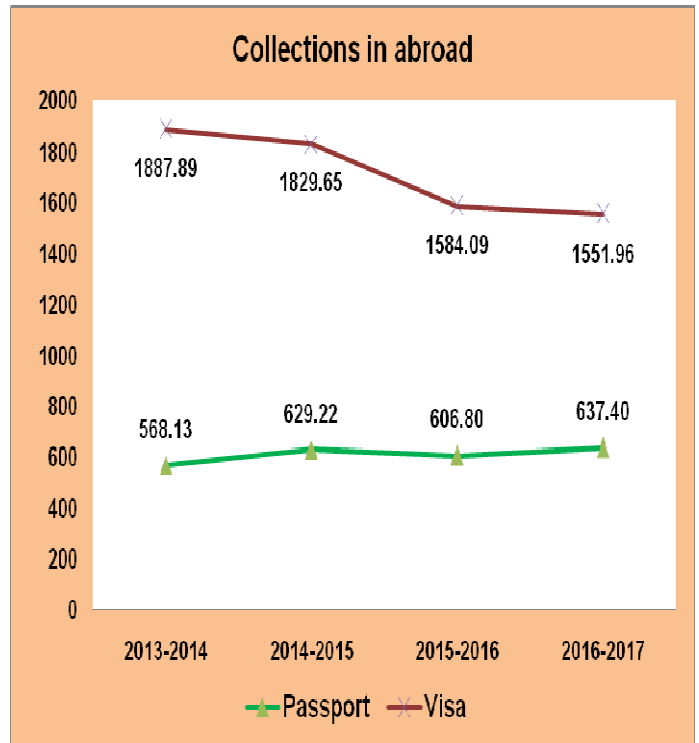
Item	2013-2014		2014-2015		2015-2016		2016-2017	
	Passport	Visa	Passport	Visa	Passport	Visa	Passport	Visa
<b>Regional Passport Offices (India)</b>	1305.00	25.71	1537.85	55.05	1633.36	306.21	1648.45	466.08
<b>Missions (Abroad)</b>	568.13	1887.89	629.22	1829.65	606.80	1584.09	637.40	1551.96
<b>Total:</b>	1873.13	1913.60	2167.07	1884.70	2240.16	1890.30	2285.85	2018.04

**TREND OF PASSPORT AND VISA FEES RECEIPTS**

*(Rs. in Crore)*



*(Rs. in Crore)*



CHAPTER – 6

**EXPENDITURE ANALYSIS**

**GRANT No.028 – MINISTRY OF EXTERNAL AFFAIRS**  
**Financial year 2016-17**

*(Rs. in Crore)*

	<b>Total grant or appropriation</b>	<b>Actual Expenditure</b>	<b>Excess (+) Saving (-)</b>
<b>Revenue :</b>			
Charged	0.03	0.00	-0.03
Voted Original + Supplementary	12279.66	11159.50	-1120.16
<b>Capital :</b>			
Voted Original + Supplementary	2983.00	1613.12	-1369.88
<b>Grand Total</b>	<b>15262.69</b>	<b>12772.62</b>	<b>-2490.07</b>
Amount surrendered within appropriation	0.03	0.00	0.03
Amount surrendered within grant	1836.66	0.00	1836.66
<b>Total Surrender</b>	<b>1836.69</b>	<b>0.00</b>	<b>1836.69</b>

The Budget of Rs.15262.69 crores comprised Rs.12279.69 crores under the Revenue Section and Rs.2983.00 crores under the Capital Section. This also included supplementary grant of Rs.600.03 crores in Revenue Section.

Expenditure of Rs.12772.62 crores was incurred out of which 11159.50 crores pertained to the Revenue Section and Rs.1613.12 crores pertained to the Capital Section of accounts. This included revenue expenditure of Rs.191.97 crores and capital expenditure of Rs.19.87 crores incurred by other Ministries (on behalf of MEA) as agents.

There was a net saving of Rs.494.13 crores under Revenue Section and net saving of Rs.159.25 crores under the Capital Section. A sum of Rs.626.06 crores was surrendered under Revenue Section and Rs.1210.63 crores under the Capital Section.

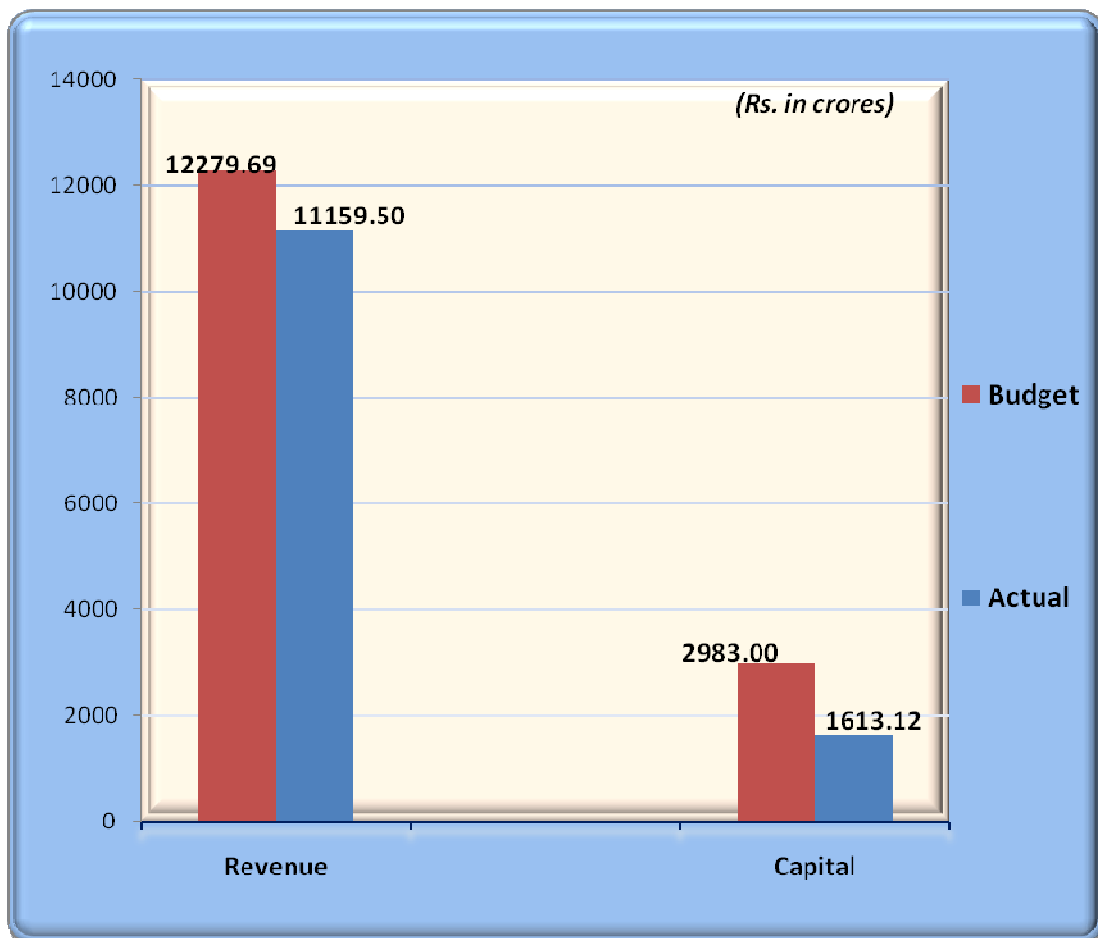
Trend of expenditure for the last three years is shown in the table given below:

(Rs. in Crore)

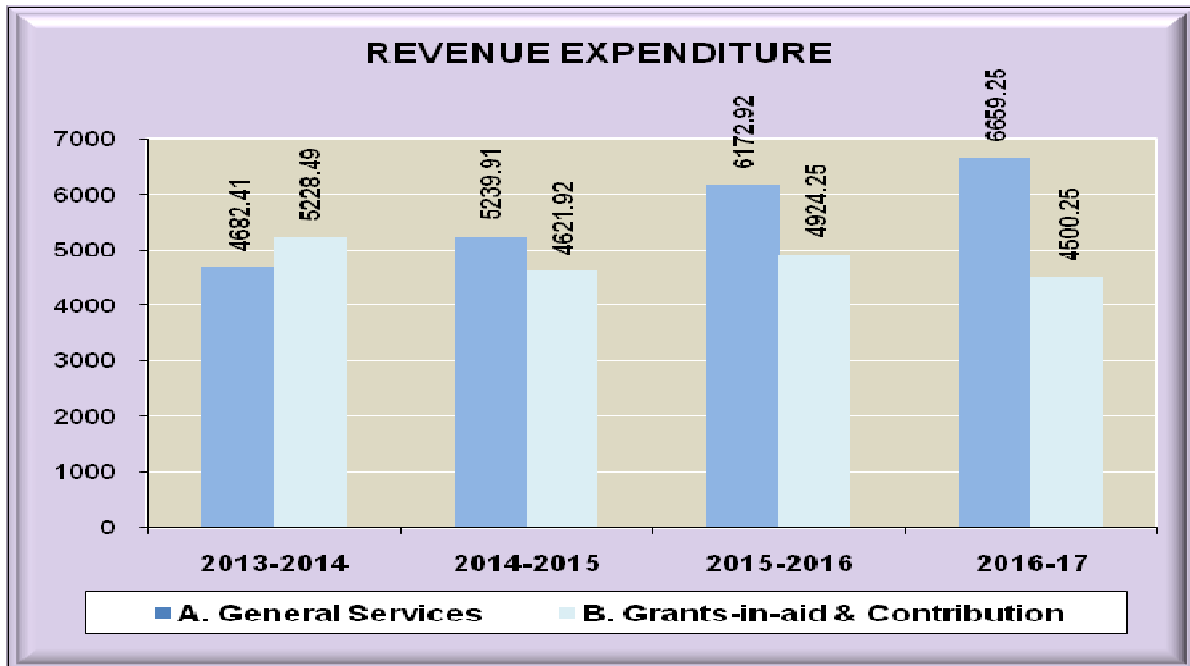
	2014-15			2015-16			2016-17		
	Budget (BE)	Actual	%age Utilisation	Budget (BE)	Actual	%age Utilisation	Budget (BE)	Actual	%age Utilisation
Revenue	11264.40	9861.83	87.55	11248.05	11097.17	98.66	12279.69	11159.50	90.88
Capital	3466.01	2286.99	65.98	2728.80	3375.78	90.53	2983.00	1613.12	54.08
<b>Total</b>	<b>14730.41</b>	<b>12148.82</b>	<b>82.47</b>	<b>14976.85</b>	<b>14472.95</b>	<b>96.64</b>	<b>15262.69</b>	<b>12772.62</b>	<b>83.69</b>

The overall budgetary utilization during FY 2016-17 was 83.69 %. In terms of percentage of utilization in Revenue and Capital Sections, it amounts to 90.88% and 54.08% respectively.

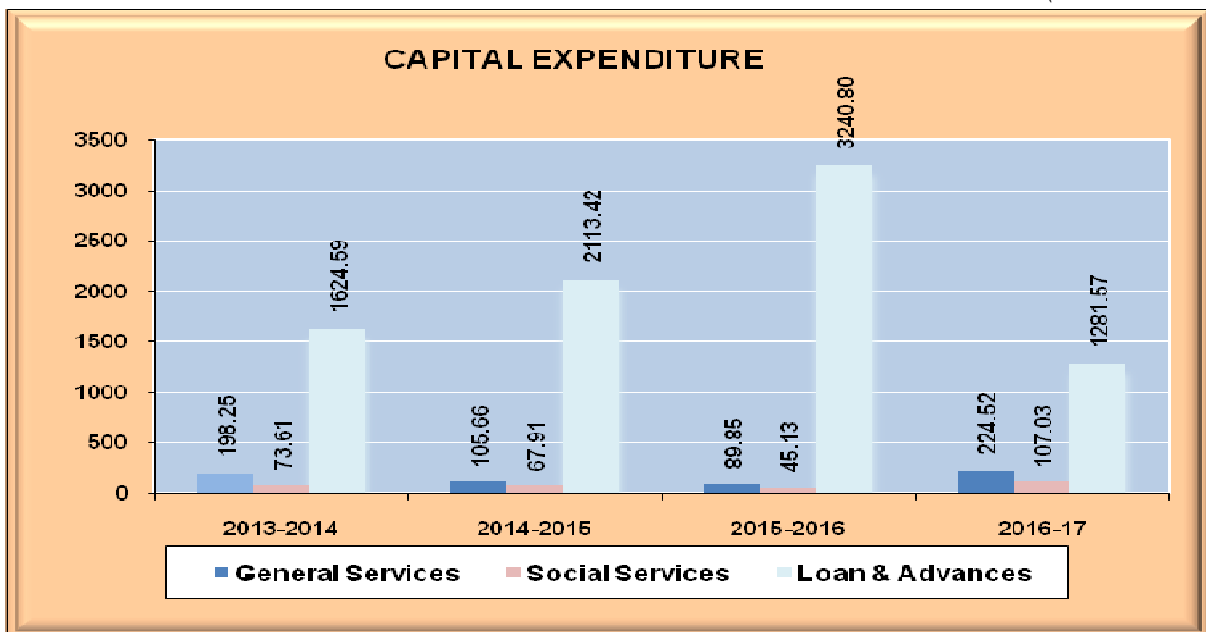
#### BUDGET Vs ACTUAL EXPENDITURE



(Rs. in Crore)



(Rs. in Crore)



In addition to its own expenditure (Grant No.028) the Ministry of External Affairs also incurs expenditure on behalf of other functional Ministries/Departments. Under the accounting procedure laid down by Ministry of Finance, this total expenditure is booked in the Statement of Central Transactions (SCT) of this Ministry. These amounts are intimated to concerned Ministries / Departments to be included in their Appropriation Accounts. Similarly the

expenditure relating to MEA incurred by agent Ministries / Departments is included in MEA's Grant.

**The Grant-wise details of expenditure incurred during the year 2016-17 are shown below:**

*(Rs. in Crore)*

<b>Grant No.</b>	<b>Ministry / Department</b>	<b>Revenue</b>	<b>Capital</b>	<b>Total</b>
1	Agriculture	2.08		2.08
4	Atomic Energy	3.47		3.47
5	AYUSH	4.49		4.49
9	Civil Aviation	2.19		2.19
11	Commerce	163.14		163.14
12	Industrial Policy	3.75		3.75
19	Culture	15.13		15.13
27	Environment & Forest	0.00	0.00	0.00
28	External Affairs*	11159.50	1613.12	12772.62
29	Finance/Eco. Aff.	12.14		12.14
31	Interest Payments	50.75		50.75
35	CPAO	310.74		310.74
36	Audit	32.53		32.53
37	Finance-Revenue	8.97		8.97
39	CBEC	0.01		0.01
46	Home Affairs	0.12		0.12
47	Cabinet Affairs	5.28		5.28
48	Police	0.28		0.28
52	Higher Education	5.87		5.87
64	PPG&P	2.52		2.52
77	Science & Tech.	9.58		9.58
79	Bio Technology	0.06		0.06
80	Shipping	8.70		8.70
81	Skill Development	0.18		0.18
82	Social Justice	14.41		14.41
84	Space	3.91		3.91
88	Tourism	15.94		15.94
<b>Total</b>		<b>11835.74</b>	<b>1613.12</b>	<b>13448.86</b>

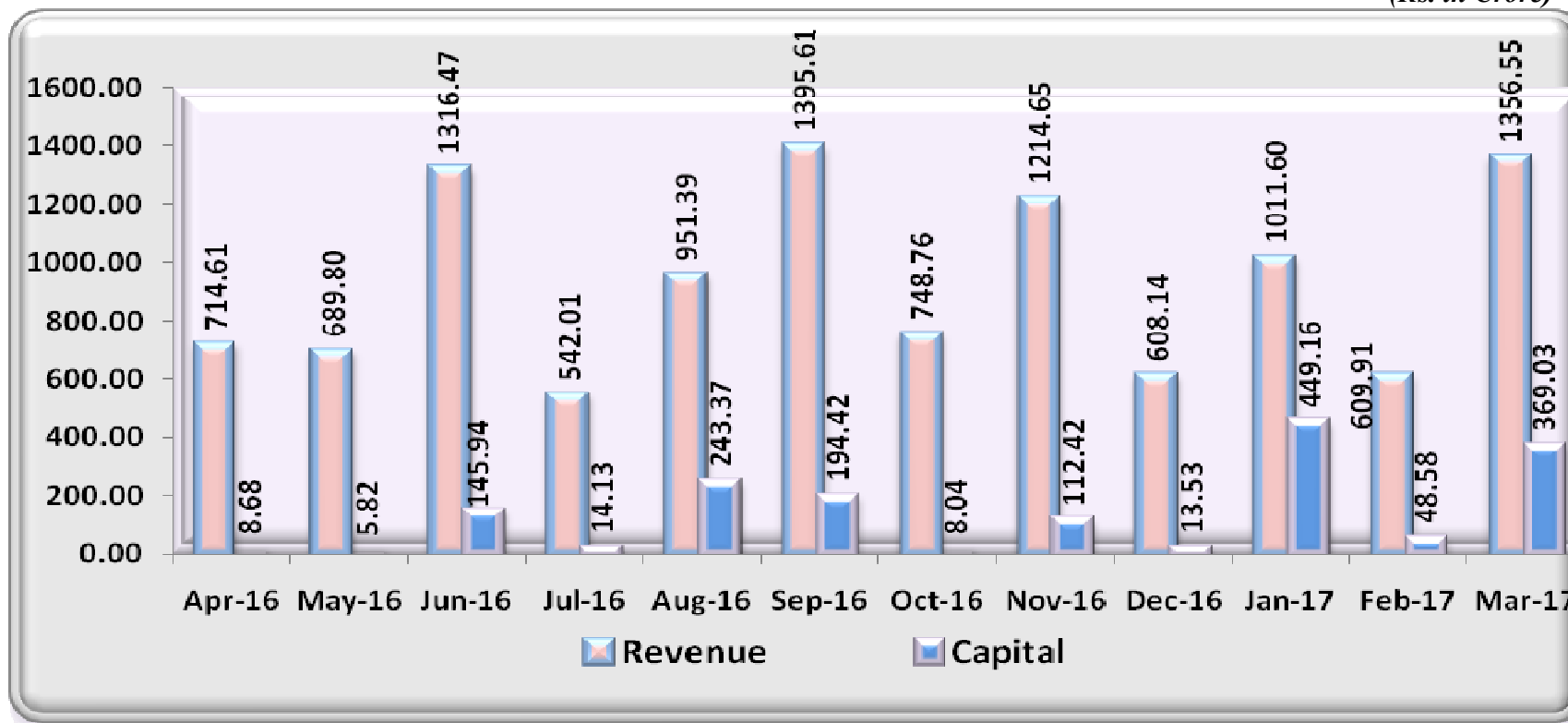
*\*Includes Rs.191.97 crores revenue expenditure and Rs.19.87 crores Capital expenditure incurred by Agent Ministries*

### MONTHLY TREND OF EXPENDITURE 2016-2017

(Rs. in Crore)

Month	Apr	May	June	July	Aug	Sept	Oct	Nov	Dec	Jan	Feb	Mar	Total
<b>Revenue</b>	714.61	689.80	1316.47	542.01	951.39	1395.61	748.76	1214.65	608.14	1011.60	609.91	1356.55	11159.50
<b>Capital</b>	8.68	5.82	145.94	14.13	243.37	194.42	8.04	112.42	13.53	449.16	48.58	369.03	1613.12
<b>Total</b>	723.29	695.62	1462.41	556.14	1194.76	1590.03	756.80	1327.07	621.67	1460.76	658.49	1725.58	12772.62

(Rs. in Crore)





**TOTAL BUDGET OUTLAY AND EXPENDITURE  
FOR THE YEAR 2016-17**

(Rs. in Crore)

		Final Estimates	Expenditure	Excess+ Saving(-)	%age utilisation of Budget
<b>REVENUE SECTION</b>					
Non-Plan	Voted	10195.16	10024.65	-170.51	98.33
	<i>Charged</i>	0.00	0.00	0.00	0.00
Plan	Voted	1458.47	1134.85	-323.62	77.81
<b>Total Revenue</b>		<b>11653.63</b>	<b>11159.50</b>	<b>-494.13</b>	<b>95.76</b>
<b>CAPITAL SECTION</b>					
Non-Plan	Voted	300.00	331.55	31.55	110.52
Plan	Voted	1472.37	1281.57	-190.80	87.04
<b>Total Capital</b>		<b>1772.37</b>	<b>1613.12</b>	<b>-159.25</b>	<b>91.01</b>
<b>Total Non Plan</b>		<b>10495.16</b>	<b>10356.20</b>	<b>-138.96</b>	<b>98.68</b>
<b>Total Plan</b>		<b>2930.84</b>	<b>2416.42</b>	<b>-514.42</b>	<b>82.45</b>
<b>Grand Total</b>		<b>13426.00</b>	<b>12772.62</b>	<b>-653.38</b>	<b>95.13</b>

## EXPENDITURE TRENDS OF SCHEMES

(Rs. in Crore)

S. No.	Scheme	2014-2015	2015-2016	2016-17
1	Secretariat General Services	288.12	314.18	378.75
2	Foreign Service Institute	6.82	9.14	9.77
3	Embassies and Missions	2104.23	2285.99	2486.94
4	Special Diplomatic Expenditure	1714.66	1777.78	1935.80
5	International Conferences/Meetings	0.15	0.05	0.09
6	Central Passport and Emigration Organisation			
6.1	Central Passport and Emigration Organisation	529.67	967.45	817.28
6.2	Payment to State Govts./UTs for Police Verification	25.49	40.00	50.00
6.3	Legal Counseling/Assistance to Indian workers in the Gulf	0.06	0.05	0.00
7	Entertainment Charges	38.49	38.60	50.34
8	International Cooperation			
8.1	Commonwealth Secretariat	6.53	10.39	24.49
8.2	Commonwealth Foundation	1.20	1.31	1.10
8.3	Other International Organisations	23.92	21.80	29.69
8.4	United Nations Organisations	156.94	244.49	170.28
8.5	SAARC Secretariat	9.73	8.64	9.93
8.6	Council for Security Cooperation in Asia Pacific	0.16	0.29	0.39
8.7	South Asian University	60.08	122.10	183.77
8.8	Nalanda International University Plan	17.00	31.67	80.23
9	Indian Council for Cultural Relations	167.20	192.00	185.37
10	Other Expenditure			
10.1	Demarcation of Boundaries	0.88	2.26	2.60
10.2	High Level Visits Abroad	12.91	14.87	7.54
10.3	Other Special Delegations	0.00	1.06	0.54
10.4	Expenditure on Haj	9.75	10.77	12.13
10.5	SRIS for Non-aligned and Other Developing Countries	5.28	5.85	6.90
10.6	Indian Council of World Affairs	10.05	11.48	9.81
10.7	MEA Hostels & Residential Complexes	6.27	8.45	7.75
10.8	Other Schemes			
	Non-Plan	33.41	32.29	67.92
	Plan	0.00	0.00	10.00
10.9	Object-d Art Cell	0.88	0.01	0.03
10.10	United Service Institute-UN Peace keeping Force	1.41	1.51	2.00

10.11	Expenditure on Holding Seminars & Studies	0.51	1.68	6.10
10.12	Propogation of Hindi through Missions Abroad	2.88	10.89	5.01
10.13	Republic Day and Independence Day Celebrations	5.23	5.86	6.72
10.14	Loss by Exchange	0.00	0.00	0.00
10.15	Maintenance cost of Aircrafts of AirIndia exclusively meant for VVIP Travel	0.00	0.00	100.00
11	Technical and Economic Cooperation with Other Countries			
11.1	Aid to Bangladesh Grant (Non Plan)	197.84	155.68	82.59
11.2	Aid to Bhutan			
	Loan (Plan)	2113.42	3240.80	1281.57
	Loan (Non-Plan)	0.00	0.00	0.00
	Grant (Plan)	1135.16	744.01	961.15
	Grant (Non Plan)	1146.59	1383.65	1198.74
11.3	Aid to Nepal Grant (Non-Plan)	303.26	309.94	332.72
11.4	Aid to South & South East Asia under Colombo Plan	8.96	7.90	9.58
11.5	Aid to Sri Lanka	499.70	403.80	99.16
11.6	Aid to Maldives	26.08	55.04	80.00
	Loan (Non-Plan)	0.00	0.00	0.00
11.7	Aid to Myanmar Plan	52.55	49.20	78.96
	(Non-Plan)	51.79	67.87	44.66
11.8	Aid to Other Developing Countries			
	Grant (Plan)			
	Grant (Non-Plan)	54.13	103.50	113.77
11.9	Aid for Disaster Relief	24.77	117.22	23.30
11.10	Aid to African Countries	142.86	283.83	286.39
11.11	Aid to Central Asia	11.94	19.36	10.73
11.12	Aid to Latin American Countries	12.17	15.03	8.77
11.13	Aid to Afghanistan			
	Grant (Plan)	61.55	45.01	4.50
	Grant(Non-Plan)	661.97	835.43	258.52
11.14	Aid to Mongolia			
	Grant (Non-Plan)	2.28	7.49	1.94
11.15	ITEC Programme	162.27	196.17	203.71
11.16	SAARC Programme	6.01	3.15	5.94
11.17	SCAAP Programme	30.05	34.79	37.09
11.18	Multilateral Economic Relation Programme	9.08	9.68	12.19
11.19	Investment Promotion & Publicity Programme	15.18	55.78	75.56
12	Energy Security	0.32	0.11	0.02
13	ASEAN Multilateral	5.41	20.60	10.29

14	Chahbahar Port	0.00	0.00	100.00
15	Aid to Mauritius	0.00	0.00	409.97
16	Aid to Seychelles	0.00	0.00	49.98
17	Chancery/ Office Buildings	105.66	89.85	224.52
18	Residential Buildings	67.91	45.13	107.03
	<b>GRAND TOTAL</b>	<b>12148.82</b>	<b>14472.93</b>	<b>12772.62</b>
	<b>PLAN EXPENDITURE</b>	<b>3379.68</b>	<b>4110.69</b>	<b>2416.41</b>
	<b>NON PLAN EXPENDITURE</b>	<b>8769.14</b>	<b>10362.24</b>	<b>10356.21</b>

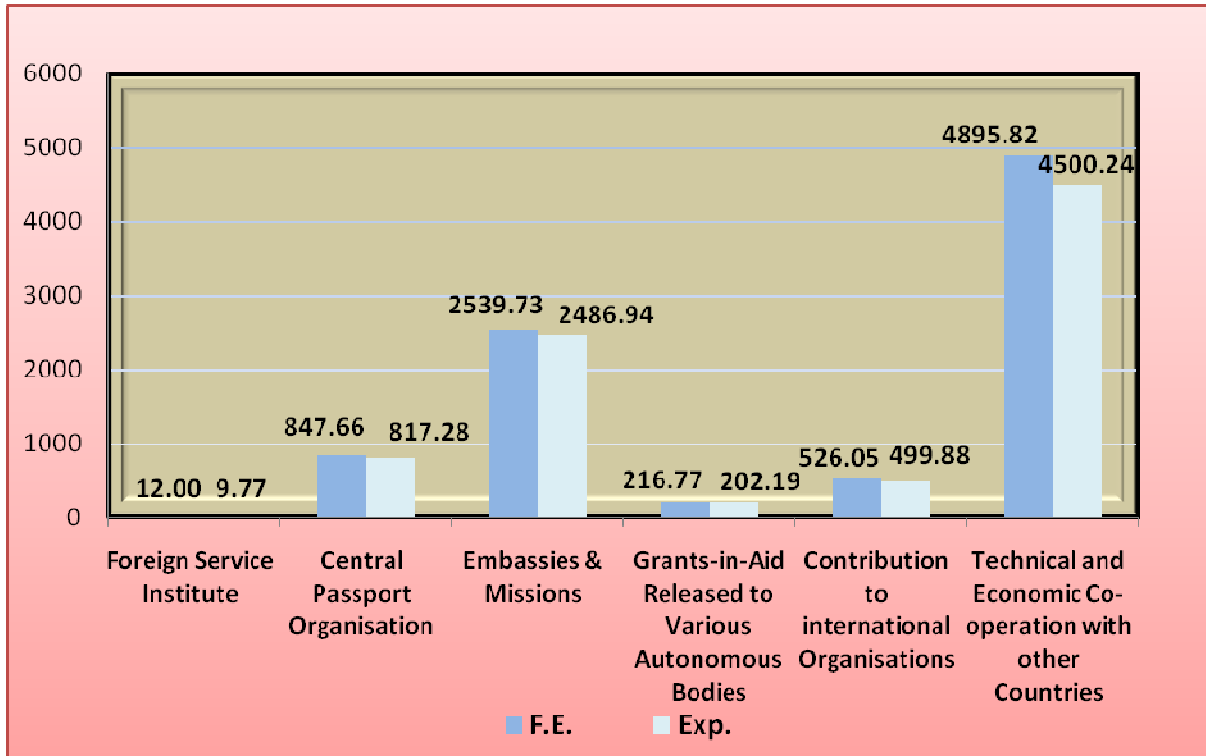
**BUDGET VIS-À-VIS ACTUAL EXPENDITURE ON DIFFERENT PROGRAMMES  
2016-2017**

*(Rs. in Crore)*

Sl. No	Programmes	F.E.	Exp.
1	Foreign Service Institute	12.00	9.77
2	Central Passport Organisation	847.66	817.28
3	Embassies & Missions	2539.73	2486.94
4	Grants-in-Aid Released to Various Autonomous Bodies	216.77	202.19
5	Contribution to international Organisations	526.05	499.88
6	Technical and Economic Co-operation with other Countries	4895.82	4500.24

**BUDGET AND ACTUAL EXPENDITURE ON DIFFERENT PROGRAMMES 2016-2017**

*(Rs. in Crore)*



**EXPENDITURE OF REGIONAL PASSPORT OFFICES  
2013-2014 to 2016-2017**

*(Rs. in Crore)*

S. No	R.P.O	2013-2014	2014-2015	2015-2016	2016-2017
1	Ahmedabad	6.60	5.89	7.12	7.94
2.	Amritsar		2.69	2.86	3.29
3.	Bangalore	5.48	6.50	6.95	8.37
4.	Bareilly	3.68	2.49	2.97	3.10
5.	Bhopal	3.23	2.81	3.27	4.19
6.	Bhubaneshwar	1.52	2.15	2.23	2.49
7.	Kolkata	5.78	6.65	8.16	10.49
8.	Chandigarh	6.55	6.44	7.06	7.39
9.	Chennai	5.76	6.43	7.12	8.60
10.	Delhi @	306.50	384.43	795.12	623.79
11.	Dehradun		2.52	2.37	2.27
12.	Ghaziabad	2.82	2.85	3.82	4.42
13.	Guwahati	2.12	2.43	3.24	3.99
14.	Hyderabad	10.22	9.22	11.85	11.49
15.	Jaipur	4.47	5.04	5.81	7.38
16.	Jalandhar	7.53	5.73	6.07	6.94
17.	Jammu	1.26	1.30	1.39	1.66
18.	Ernakulam	5.91	6.82	7.17	7.77
19.	Kozhikode	5.59	5.86	6.12	6.76
20.	Lucknow	8.75	11.08	12.23	13.58
21.	Madurai		4.28	4.05	4.63
22.	Mumbai	12.07	7.13	7.57	7.80
23.	Nagpur	1.27	1.59	1.86	2.15
24.	Panaji	1.25	1.29	1.51	1.80
25.	Patna	3.72	4.28	6.54	6.55
26.	Pune		3.45	3.95	4.86
27.	Srinagar	1.90	1.78	2.17	2.64
28.	Tiruchirappalli	7.62	4.97	4.87	5.65
29.	Thiruvananthapuram	4.46	4.72	4.53	4.82
30.	Vishakhapatnam	2.46	3.11	4.08	6.00
31.	Raipur		1.32	1.45	1.81
32.	Ranchi	2.04	2.25	2.47	2.95
33.	Shimla		0.97	1.16	1.51
34.	Surat		2.01	2.61	3.00
35.	Thane		3.29	3.76	4.32

36.	Mallapuram	3.57	4.17	4.07	4.63
37.	Coimbatore	2.16	2.63	2.55	2.58
	<b>TOTAL</b>	<b>436.29</b>	<b>532.21</b>	<b>962.13</b>	<b>813.61</b>

*(@ includes CPV Division & PAO)*

**STATEMENT SHOWING ASSISTANCE FOR TECHNICAL AND ECONOMIC  
COOPERATION WITH OTHER COUNTRIES**

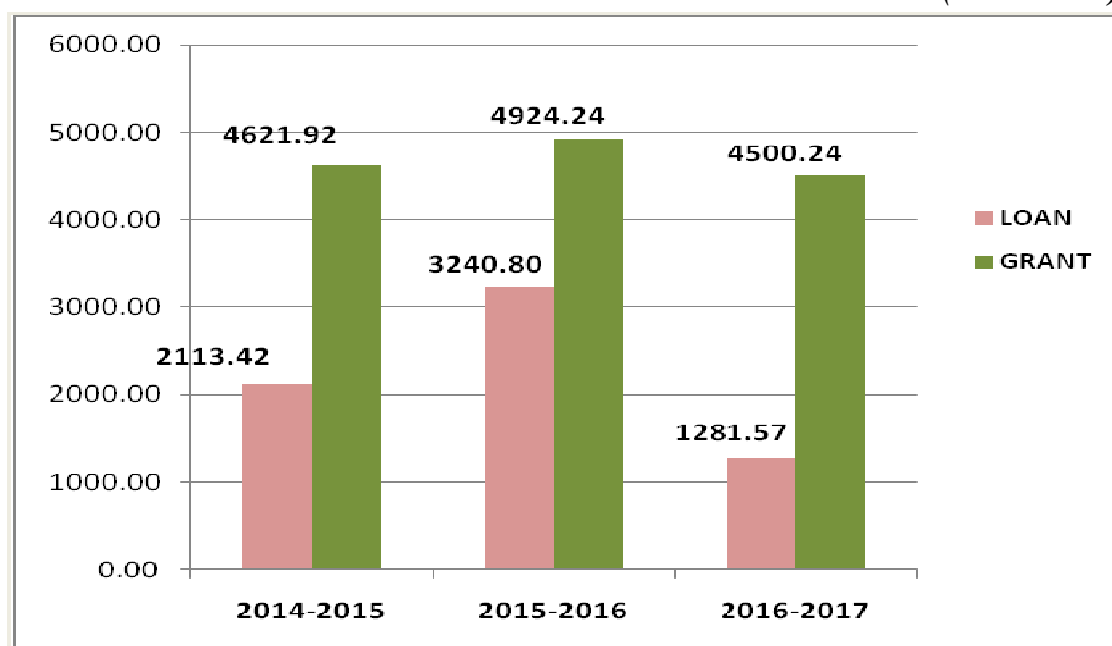
*(Rs. in Crore)*

	<b>2014-2015</b>	<b>2015-2016</b>	<b>2016-2017</b>
Aid to Bangladesh	197.84	155.68	82.59
Aid to Bhutan	2281.75	2127.66	2159.90
Loan	2113.42	3240.80	1281.57
Aid to Nepal	303.26	309.94	332.72
Colombo Plan	8.96	7.90	9.58
Aid to Sri Lanka	499.70	403.80	99.16
Aid to Maldives	26.08	55.04	80.00
Loan	0.00	0.00	0.00
Aid to Mongolia	2.28	7.49	1.94
Aid to Myanmar	104.34	117.07	123.62
Aid to other Developing Countries	54.13	103.50	113.77
Aid to Latin American Countries	12.17	15.03	8.77
Aid to Afghanistan	723.52	880.44	263.02
Aid for Disaster Relief	24.77	117.22	23.30
ITEC Programme	162.27	196.17	203.71
SAARC Programme	6.01	3.15	5.94
SCAAP Programme	30.05	34.79	37.09
Aid to African Countries	142.86	283.83	286.39
Multilateral Economic Relation Programme	9.08	9.68	12.19
Investment Promotion & Publicity Programme	15.18	55.78	75.56
Aid to Central Asia	11.94	19.36	10.73
Energy Security	0.32	0.11	0.02
ASEAN Multilateral	5.41	20.60	10.29
Chahbahar Port	0.00	0.00	100.00
Aid to Mauritius	0.00	0.00	409.97
Aid to Seychelles	0.00	0.00	49.98
<b>TOTAL LOAN</b>	<b>2113.42</b>	<b>3240.80</b>	<b>1281.57</b>
<b>TOTAL GRANT</b>	<b>4621.92</b>	<b>4924.24</b>	<b>4500.24</b>



**Distribution of Loans And Grant during 2016-2017**

*(Rs. in Crore)*



**CONTRIBUTIONS TO INTERNATIONAL ORGANISATIONS**

During the year 2016-2017 MEA paid Rs.498.38 crores as contribution towards membership of various International Organisations. The details are as under:

*(Rs. in Crore)*

S. No.	Organisation	Contributions
1	United Nations Organisation	170.28
2	Commonwealth	25.59
3	Council for Security Cooperation in Asia and Pacific	0.39
4	Contribution to SAARC Secretariat	9.93
5	Nalanda University	80.23
6	South Asian University	183.77
7	Other International Organisations	28.19
	<b>TOTAL</b>	<b>498.38</b>

**GRANTS IN AID RELEASED TO VARIOUS GRANTEE INSTITUTIONS DURING THE  
LAST THREE YEARS**

*(Rs. in Crore)*

S.No.	Name of the Undertaking/Institution	2014-2015	2015-2016	2016-2017
<b>I</b>	<b>ICCR</b>	<b>167.20</b>	<b>192.00</b>	<b>185.37</b>
<b>II.</b>	<b>Other Bodies</b>			
1	Indian Society for International Law	0.05	0.05	0.05
2	Society for Research & Information System for Non-aligned and Other Developing Countries	5.29	5.85	6.90
3	Indian Council for Research on International Economic Relations	0.10	0.10	0.06
4	Institute of Chinese Studies	1.08	1.05	1.04
5	Indian Federation of UN Associates	0.06	0.03	0.03
6	ICCR & IFUNA for Organising UN Day	0.00	0.02	0.02
7	Indian Council of World Affairs	10.05	11.48	9.81
8	UN Service Institute (UN Peace Keeping Force)	1.41	1.51	2.00
9	Maison de l'inde	0.24	0.00	0.00
10	Centre for Research in Rural & Industrial Development Chandigarh	1.32	0.73	0.00
	<b>Total Other Bodies</b>	<b>19.60</b>	<b>20.82</b>	<b>19.91</b>
	<b>Grand Total</b>	<b>186.80</b>	<b>212.82</b>	<b>205.28</b>

**LOAN: PAYMENTS, REPAYMENTS & OUTSTANDINGS**

*(Rs. in Crore)*

Particulars	Outstanding as on 01/04/2016 (Dr.)	Additional Loan Provided	Recoveries	Outstanding as on 31/03/2017 (Dr.)
<b>A. Loan to Foreign Govts.</b>	11463.92	1281.57	298.00	12447.49
<b>B. Loans to Govt. Servants</b>	-1.31	0.21	0.57	-1.67
<b>Total</b>	11462.61	1281.78	298.57	12445.82

**SUSPENSE ACCOUNTS: PAO SUSPENSE**

*(Rs. in Crore)*

Opening Balance as on 01.04.2014	2014-2015		2015-2016		2016-2017		Closing Balance as on 31/03/2017
	Dr.	Cr.	Dr.	Cr.	Dr.	Cr.	
530.89	8.41	20.51	30.98	146.08	-23.81	-106.30	575.82

Transactions appearing under this head of account are purely of transitory nature. The Credit and Debit amounts represent respectively the amounts initially received / paid by the Ministry which are to be settled with other Ministries / Departments etc. For example, payments made by Missions to visiting officials / Officers from the Central and State Governments are initially booked under this head (Debit) and cleared when the amounts are received from Ministries / State Governments concerned. Accumulation of Debit balances under this head is mainly due to late reimbursement / non-reimbursement of amounts by the Ministries / State Governments concerned.

**LOANS AND ADVANCES TO FOREIGN GOVERNMENTS**

*(Rs. in Crore)*

Country	Opening Bal. as on 01.04.2014 (Loan outstanding)	2014-2015		2015-2016		2016-2017		Closing Bal. as on 31.03.2017 (Loan outstanding)
		Repayment of Loan	Loan Disbur- sement	Repayment of Loan	Loan Disbur- sement	Repayment of Loan	Loan Disbur- sement	
<i>Bhutan</i>	6075.39	452.93	2113.42	152.93	3240.80	134.26	1281.57	11971.06
<i>Maldives</i>	834.49	157.25	0.00	158.63	0.00	163.74	0.00	354.87
<i>Mongolia</i>	121.55	0.00	0.00	0.00	0.00	0.00	0.00	121.55
<b>Total</b>	<b>7031.43</b>	<b>610.18</b>	<b>2113.42</b>	<b>311.56</b>	<b>3240.80</b>	<b>298.00</b>	<b>1281.57</b>	<b>12447.48</b>

## SECTORAL ANALYSIS OF TOTAL DISBURSEMENTS

*(Rs. in Crore)*

Particulars	2013-14	2014-15	2015-2016	2016-2017
<b>Revenue</b>				
General Services	4971.91	5577.90	6496.27	7028.06
Social Services	16.86	23.57	31.22	40.22
Economic Services	184.75	199.77	204.31	224.76
Grants-in-aid	5169.75	4548.59	4795.03	4331.28
<b>Total</b>	<b>10343.27</b>	<b>10349.83</b>	<b>11526.83</b>	<b>11624.32</b>
<b>Capital</b>				
General Services	185.99	87.03	113.17	205.58
Social Services	72.17	66.47	44.99	106.08
Loans & Advances	1624.87	2113.59	3240.96	1281.78
<b>Total (Capital+Loans &amp; Advances)</b>	<b>1883.03</b>	<b>2267.09</b>	<b>3399.12</b>	<b>1593.44</b>
<b>Grand Total</b>	<b>12226.30</b>	<b>12616.92</b>	<b>14925.95</b>	<b>13217.76</b>

*(Source: Statement of Central Transactions 2016-2017)*

This table includes figures pertaining to Composite Grants controlled by other Ministries viz., Pension, Loans to Govt. Servants, Interest payments etc.

CHAPTER – 7

**RECEIPT AND EXPENDITURE OF MISSIONS**

Revenue Collected and Expenditure incurred by Missions/Post abroad during 2016-2017  
(Rs. in Crore)

Name of the Mission/Post abroad	Receipt	Expenditure
AHCI, CHITTAGONG	0.19	5.53
AHCI, KANDY	2.18	5.28
AHCI, MOMBASSA	0.00	2.12
AHCI, RAJSHAHI	0.00	3.86
CAMP OFFICE EI, VIRATNAGAR	0.00	2.09
CGI, SITTWE	0.00	3.20
CGI, ATLANTA	49.16	15.09
CGI, BALI	0.98	2.91
CGI, BIRGANJ	0.01	7.87
CGI, BIRMINGHAM	76.59	13.78
CGI, CHICAGO	60.47	17.85
CGI, DUBAI	145.77	32.52
CGI, DURBAN	0.96	7.98
CGI, EDINBURGH	11.69	6.71
CGI, ERBIL	0.00	1.92
CGI, FRANKFURT	32.35	14.57
CGI, GUANGZHOU	33.57	13.31
CGI, HAMBANTOTA	0.20	4.07
CGI, HAMBURG	12.83	2.50
CGI, HERAT	0.10	17.35
CGI, HO CHI MINH CITY	3.47	4.92
CGI, HONGKONG	14.94	13.36
CGI, HOUSTON	63.05	18.50
CGI, ISTANBUL	4.76	8.10
CGI, JAFFNA	2.35	9.17
CGI, JALALABAD	0.11	14.50
CGI, JOHANNESBURG	4.13	9.05
CGI, JUBA	0.33	10.25
CGI, KANDHAR	0.12	15.57
CGI, KOBE	2.19	9.63
CGI, MANDALEY	1.26	4.34
CGI, MAZAR-E-SHARIEF	0.20	13.83
CGI, MEDAN	0.81	2.03

<b>Name of the Mission/Post abroad</b>	<b>Receipt</b>	<b>Expenditure</b>
CGI, MELBOURNE	54.32	10.56
CGI, MILAN	42.80	11.14
CGI, MUNICH	36.41	12.65
CGI, NEW YORK	132.62	40.63
CGI, PERTH	17.18	4.93
CGI, SANFRANCISCO	106.37	40.31
CGI, SAO PAOLO	4.39	9.60
CGI, SHANGHAI	18.52	15.57
CGI, ST. DENIS	2.02	2.78
CGI, ST. PETERSBERG	6.45	10.38
CGI, SYDNEY	52.43	9.47
CGI, TORONTO	71.33	15.20
CGI, VANCOUVER	61.26	11.63
CGI, VLADIVOSTOK	0.27	3.65
CGI, ZANZIBAR	1.14	2.41
CI, SHIRAJ	0.16	2.06
CI, ZAHIDAN	0.33	2.62
COI, CHIANGMAI	0.76	2.69
EI, ABIDJAN	1.59	6.75
EI, ABUDHABI	42.19	21.50
EI, ADDIS ABABA	3.69	12.41
EI, ALGIERS	0.95	6.97
EI, AMMAN	2.50	4.84
EI, ANKARA	2.25	11.20
EI, ASHGABAD	3.46	6.98
EI, ASTANA	0.25	13.63
EI, ATHENS	2.67	8.15
EI, BAGHDAD	21.09	10.72
EI, BAHRIN	20.46	10.40
EI, BAKU	0.36	7.31
EI, BAMAKO	0.25	4.07
EI, BANGKOK	37.69	21.69
EI, BEIJING	18.42	50.65
EI, BEIRUT	1.82	9.71
EI, BELGRADE	0.50	5.49
EI, BERLIN	10.04	33.26
EI, BERNE	20.71	16.75
EI, BISHKEK	1.16	7.09

<b>Name of the Mission/Post abroad</b>	<b>Receipt</b>	<b>Expenditure</b>
EI, BOGOTA	1.42	7.56
EI, BRASILIA	1.02	12.97
EI, BRATISLAVA	1.06	6.81
EI, BRUSSELS	13.11	21.69
EI, BUCHAREST	1.80	7.37
EI, BUDAPEST	1.85	8.55
EI, BUENOS AIRES	0.65	10.77
EI, CAIRO	5.14	22.73
EI, CARACUS	0.39	9.83
EI, COPENHEGAN	10.09	11.25
EI, DAKAR	0.35	7.05
EI, DAMASCUS	1.40	4.75
EI, DOHA	40.26	23.19
EI, DUBLIN	12.92	8.86
EI, DUSHANBE	1.26	8.37
EI, GUATEMALA	0.24	9.02
EI, HANOI	2.87	11.68
EI, HAVANA	0.12	8.70
EI, HELSINKI	7.05	7.15
EI, JAKARTA	0.00	14.17
EI, JEDDAH	50.50	75.85
EI, KABUL	1.99	62.94
EI, KATHMANDU	3.34	46.98
EI, KHARTOUM	6.93	9.36
EI, KIEV	4.35	14.02
EI, KINSHASA	1.76	5.98
EI, KUWAIT	55.15	18.82
EI, LIMA	0.47	7.63
EI, LISBON	4.53	8.01
EI, LUANDA	0.80	11.04
EI, MADAGASCAR	0.63	4.52
EI, MADRID	18.97	16.42
EI, MANILA	9.28	7.13
EI, MAPUTO	2.65	7.11
EI, MEXICO CITY	1.82	10.26
EI, MINSK	2.49	6.16
EI, MOSCOW	45.17	47.82
EI, MUSCAT	74.29	18.04

<b>Name of the Mission/Post abroad</b>	<b>Receipt</b>	<b>Expenditure</b>
EI, NIAMEY	0.07	4.58
EI, OSLO	5.04	11.31
EI, PANAMA	0.75	7.72
EI, PARAMARIBO	0.43	5.50
EI, PARIS	65.85	55.34
EI, PHNOMPENH	1.54	9.71
EI, PRAGUE	4.40	5.95
EI, PYONG YANG	0.00	3.22
EI, RABAT	1.22	6.43
EI, REYKJAVIK	0.15	7.91
EI, RIYADH	13.33	34.60
EI, ROME	14.43	25.79
EI, SANNAS	6.24	2.86
EI, SANTIAGO	1.12	9.77
EI, SEOUL	39.17	15.32
EI, SLOVENIA	0.61	6.61
EI, SOFIA	1.25	5.68
EI, STOCKHOLM	15.72	11.78
EI, TASHKENT	7.07	11.86
EI, TEHRAN	10.04	17.55
EI, TEL AVIV	17.08	27.09
EI, THE HAGUE	19.52	15.74
EI, THIMPU	0.19	11.62
EI, TOKYO	9.05	28.77
EI, TRIPOLI	0.43	7.61
EI, TUNIS	0.54	3.36
EI, ULAN BATOR	0.05	4.85
EI, VIENNA	10.40	21.70
EI, VIENTIANE	0.61	6.47
EI, WARSAW	6.02	7.53
EI, WASHINGTON	51.19	63.54
EI, YANGOON	10.42	14.33
EI, YARAVAN	0.47	4.11
EI, ZAGREB	0.85	6.90
HCI, ACCRA	1.58	9.56
HCI, BRUNEI	1.47	8.43
HCI, CANBERRA	0.00	15.68
HCI, CAPETOWN	0.39	4.53



<b>Name of the Mission/Post abroad</b>	<b>Receipt</b>	<b>Expenditure</b>
HCI, COLOMBO	19.50	40.25
HCI, DACCA	1.45	53.06
HCI, DAR-E-SALAM	6.25	10.73
HCI, GABARONE	0.64	5.70
HCI, GEORGETOWN	0.27	7.59
HCI, HARARE	1.32	7.14
HCI, ISLAMABAD	0.80	38.97
HCI, KAMPALA	4.78	6.41
HCI, KINGSTON	0.24	6.86
HCI, KUALALUMPUR	77.43	20.34
HCI, LAGOS	17.57	7.55
HCI, LILONGWE	1.18	6.95
HCI, LONDON	275.57	78.60
HCI, LUSAKA	2.20	5.89
HCI, MAHE	0.56	4.56
HCI, MALE	0.67	12.01
HCI, NAIROBI	10.07	11.54
HCI, NICOSIA	0.00	5.22
HCI, OTTAWA	7.34	16.38
HCI, PORT LOUIS	0.67	12.38
HCI, PORT MORESBY	0.13	7.58
HCI, PORT OF SPAIN	0.60	12.36
HCI, PRITORIA	0.27	13.77
HCI, SINGAPORE	68.81	24.29
HCI, SUVA	1.12	8.58
HCI, WELLINGTON	19.72	11.80
HCI, WINDHOEK	0.20	5.87
LO, ABUJA	24.87	9.32
LO, PHUNTSOLING	0.02	3.12
MISSION OF INDIA TO ASEAN	0.00	7.91
PMI, GENEVA	6.71	48.51
PMI, NEW YORK	0.00	45.24
ROI, GAZA	0.20	3.26

*Note: Above Revenue receipts Constitutes Visa Fee, Passport Fee, Fee under Overseas Citizenship of India Act (OCI Scheme) and Emigration Fee only.*

*Note: above expenditure includes Establishment Related Revenue Expenditure (excluding major head i.e. 2052/3605/4059/4216/7605).*

## CHAPTER – 8

### INTERNAL AUDIT

An important feature of the Departmentalized Accounting System is instituting a sound system of Internal Audit so as to ensure regularity of expenditure in terms of the Rules/Orders in force and also to check all receipts, payments and records relating to accounts and stores etc. Internal Audit is an instrument to ensure that canons of financial propriety and higher standard of financial regularities are being maintained and followed, so that Statutory Audit has little work left to do. The function of Internal Audit is not only to point out errors/omissions but also to suggest remedial measures and to render advice for better management of accounts and other records.

During the course of internal audit, efforts are made by the inspecting parties to settle the objections and get the errors and omissions rectified to the maximum extent possible by discussing the reports prepared by them with the Heads of Offices. However, paras which remain unsettled are brought to the notice of the Heads of Organizations/Offices in the form of a report after getting them vetted at the Internal Audit (Headquarters) in Delhi. Audit paras are settled wherever compliance is shown and in cases where irregularities pointed out are repeated or no corrective steps taken, the item of objection is taken afresh.

Position in respect of audit paras raised and settled during the year 2016-2017 is detailed as under:-

1	Opening balance of outstanding paras as on 01-04-2016	3026
2.	Paras added/raised during the year 2016-2017	394
3.	Paras settled during the year 2016-2017	399
4.	Paras outstanding as on 31-03-2017 (1+2-3)	3021

#### List of Major Audit findings:-

#### **1. Cases of Non-recovery of Govt. dues(Amount not less than Rs. One lakh) from Central Government Departments/State Govts. /Private Parties.**

*(Rs. in Lakh)*

SL. No.	Name of office	Para no. of report	Amount	Nature of finding
1.	PO Jammu	1	9.50	Non recovery of Rs. 9.5 Lakh from M/s TCS on accounts of expenditure incurred on payment of electricity charges for the PSK premises by the Passport Office, Jammu.

2	PO Nagpur	1	1.44	Irregularities in purchase of Two Lap Top by Passport office, Nagpur.
3	Nalanda University	5	4.09	Non recovery of excess payment of Rs.4,09,935/-.
<b>Total</b>			<b>15.03</b>	

## **2. Cases of Overpayments.**

*(Rs. in Lakh)*

<b>SL. No.</b>	<b>Name of office</b>	<b>Para no. of report</b>	<b>Amount</b>	<b>Nature of finding</b>
1.	PO Bhubaneswar	2	2.76	Excess Payment of House Rent Allowance.
2.	PO Bangalore	1	1.75	Excess payment towards arrears and interest on revenue on Electricity charges.
3.	PO Dehradun	3	9.34	Inadmissible payment to officers and staff of RPO Dehradun on account of special compensatory (Hill Area) allowance since sep 2008.
4.	PO Kozhikode	2	14.88	Payment made for providing House Keeping services without concurrence of the Ministry.
5.	HCI Mumbai	9	1.26	Excess payment on account of Pay and allowances, Gratuity and Leave Encashment.
6.	PO Raipur	1	1.16	Non-availing/Non-Deriving of discount /rebate by Regional Passport Office, Raipur on bulk booking of speed post articles offered by the Deptt. Of Posts, Ministry of Communication & IT.
7.	ICCR	13	9.00	Excess payment to consultants due to wrong fixation of consultation fee.
8.	ICCR	21	31.53	Discount not availed on bulk speed post.
9.	EOI Moscow	30	12.30	Excess payment to the officers of Project Management Team during July 2013 to March 2015 posted in the Mission.
10.	Nalanda University	2	37.00	Inadmissible payment of HRA @25% to the employees of Nalanda University.
<b>Total</b>			<b>120.98</b>	

## **3.Cases of Idle Machinery/ Surplus stores.**

NIL

**4.Cases of Loss in Fructuous Expenditure.***(Rs. in Lakh)*

SL. No.	Name of office	Para no. of report	Amount	Nature of finding
1.	PO Bareilly	4	5.40	Wastage of Passport Booklets while Printing the documents.
2.	PO Jalandhar	9	5.63	Wastage of Passport Booklets while printing the documents in 2015-16.
3.	RPO Mumbai	2	672.67	An amount of Rs. 6,72,66,983/- paid to MMRDA towards time extension fee along with interest thereof due to delay in construction of new office building for RPO Mumbai at Bandra Kurla Complex (BKC) and non-obtaining of CFO NOC by CPWD resulting huge loss to Government.
4.	RPO Mumbai	3	40.09	Loss to Govt. on account of interest due to delay in remittance of government money received by PO, Thane (NCDDO to RPO Mumbai) into Bank Account.
5.	RPO Mumbai	5	25.00	Loss to Govt. Amounting to Rs. 25 lakhs approxy. due to wastage of Passport Booklet while printing the documents.
6.	RPO Patna	4	8.98	Wastage of Passport Booklets while printing the documents resulting in loss of Rs. 8.98 Lakh to Govt. Exchequer in 2015-16.
7.	PO Kozhikode	3	34.83	Loss to Government amounting to Rs.34,83,082/- on account of wastage of Passport while printing.
8.	Public Diplomacy	3	8.00	Non Recovery of Penalty on delay in submission of documentary films, as per clause of the agreement.
9.	PO Raipur	3	3.57	Loss to Government amounting to Rs.3,27,888/- on account of wastage of Passport Booklets while printing.
10.	EOI Moscow	1	NIL	Non- Adherence to ICWF Guidelines and Accounting Procedure and loss to the government on account of short levy of ICWF per service.
11.	Nalanda University	6	49.81	Excess payment of Rs.21.03 lakh on account of transport allowance and arbitrary exemption from income tax which leads to the loss of Rs.28.78 lakhs.
<b>Total</b>			<b>853.98</b>	

**5. Cases of Irregular Expenditure.***(Rs. in Lakh)*

SL. No.	Name of office	Para no. of report	Amount	Nature of finding
1	PO Bangalore	5	90.97	Expenditure of Rs.90,97,130/- without approval of the Ministry for hiring of security personal from CAR/Karnataka industrial Security Force of Government of Karnataka.
2.	PO Jalandhar	3	5.50	Payment of Rs. 5.50 Lakh p.a. for rent of hiring of generator set in violation of GFRs 2005.
3.	RPO Mumbai	1	18.55	Expenditure incurred towards “Major Repairs & Legal Fund” under the head of Account “RRT” paid to M/s Manish Commercial Premises Co-op Society Ltd. Amounting to Rs. 18,55,7000/- without meeting codal provisions and carrying out any repairs works in the premises of RPO Mumbai.
4.	PO Dehradun	2	82.00	Unauthorized payment of rent for Rs. 82 Lakh p.a. on Passport Seva Kendra by PO Dehradun.
5.	RPO Patna	6	7.12	Unjustified payment of Rs. 7,12,845/- p.a. for maintenance of generator set for O/o RPO Patna in violation of GFR 2005.
6.	PO Kozhikode	6	7.67	Expenditure beyond delegated power to M/s Orbit Offset Prints for printing & supply of envelope amounting of Rs. 7,66,813/-
7.	HCI Mumbai	4	21.00	Irregular expenditure of Rs. 21,00,000/- approximately on account of Hiring of service of M/s. G. S. Mentor to provide faculty services at IAS coaching and guidance cell at Haj Committee of India.
8.	HCI Mumbai	8	475.00	1. Hiring of Services of contractor M/s Barve Consultant since March 2010 for structural consultancy without tender process & Agreement.

				2. Irregular payment of Rs. 4.75 Crores on account of Award of contract to M/s Lehra Construction in most of the cases and payment of repair and Maintenance during two financial years 2013-14, 2014-15 for same nature of work on the same floor.
10.	ICCR	11	163.00	Excess expenditure of Rs. 1.63 Cr. On publication of magazine.
<b>Total</b>			<b>870.81</b>	

**6. Cases of Non- Adjustment of Advances.**

*(Rs. in Lakh)*

SL. No.	Name of office	Para no. of report	Amount	Nature of finding
1.	HCI Mumbai	5	28.45	Non adjustment of Advance of Rs. 28,45,000/- drawn in the month of February 2015 towards payment of lump sum TA/DA to master/field trainers for attending orientation training held at Haj Home.
<b>Total</b>			<b>28.45</b>	

**7. Cases of blocking Govt. money.**

*(Rs. in Lakh)*

SL. No.	Name of office	Para no. of report	Amount	Nature of finding
1.	ICCR	1	100.00	Non adjustment of Rumi Foundation.
2.	ICCR	2	323.00	Abnormal delay in construction of ICCR building at 11, Nyay Maarg, Chankya Puri, New Delhi.
<b>Total</b>			<b>423.00</b>	

**8. Any Other Items of Special nature.***(Rs. in Lakh)*

<b>SL. No.</b>	<b>Name of office</b>	<b>Para no. of report</b>	<b>Amount</b>	<b>Nature of finding</b>
1.	PO Bhubaneswar	4	1.69	Non accountal of seized Cash amounting Rs. 1,69,515/-.
2.	PO Bhubaneswar	6	1.69	Non-availing of admissible discount Rs. 1,69,604/- by Regional Passport Officer, Bhubaneswar on bulk booking of speed post articles offered by the Deptt. of Post, Ministry of Communication & IT and thereby incurring excess expenditure.
3.	PO Ahmadabad	11	10.32	Non recovery of outstanding repatriation charges of Rs. 10,32,401/-
4.	PO Bangalore	2	7.55	Less rebate of Rs. 7,55,716/- by Department of Posts for sending speed post articles (SPAs).
5.	PO Bangalore	6	3.01	Non recovery of outstanding amount Rs. 2,69,161/- and \$500.00 towards repatriation charges incurred by Government of India in respect of 21 person/ Cases pending at RPO Bangalore.
6.	PO Jalandhar	11	29.02	Outstanding recovery of Rs. 29,02,730/- towards repatriation charges.
7.	PO Jammu	5	1.45	Non availing of discount amounting to Rs. 1,44,909/-
8.	RPO Mumbai	6	29.02	Non recovery of Rs. 29,02,730/- towards repatriation charges from Indian nationals
9.	PO Thane	3	3.37	Inadmissible re-imbusement of Medical Claims amounting to Rs. 3,37,217/- for treatments taken from private doctors, not appointed as Authorised Medical Attendant (AMA) by the department/ministry.
10.	PO Thane	7	5.10	Availing of Short discounts amounting to Rs. 5,10,070/- from Department of Posts on bulk booking of Speed Posts.

11.	PO Thane	13	164.83	Expenditure beyond delegated financial powers.
12.	RPO Chandigarh	8	12.68	Unrecovered amount of Rs. 12,68,179/- is pending towards repatriation charges.
13.	PO Kozhikode	11	2.06	Outstanding amount of Rs. 2,06,645/- towards repatriation charges are pending at PO Kozhikode .
14.	ICWA	11	20.99	Keeping huge amount of unutilized grant the saving/current bank account and non adjustment of interest amounting to Rs. 20,99,000/- earned on unutilized grant.
15.	Nalanda University	7	21.96	Outstanding tuition fees amounting to Rs.21.96 lakhs.
<b>Total</b>			<b>319.73</b>	

**Unit wise details of paras added, settled and outstanding as on 31.03.2017 are given below:-**

**A. In India**

S. No.	DDO's	Paras Outstanding as on 01.04.2016	Paras added during 2016-17	Paras settled during 2016-17	Paras Outstanding as on 31.03.2017
1	PO Ahmadabad	2	15	2	15
2	RPO Bangalore	26	12	24	14
3	PO Bareilly	22	13	5	30
4	PO Bhopal	24	0	0	24
5	PO Bhubaneswar	41	21	11	51
6	RPO Chandigarh	57	10	50	17
7	RPO Chennai	22	0	0	22
8	RPO Cochin	25	11	25	11
9	PO Ghaziabad	39	0	27	12
10	PO Goa	38	0	0	38
11	PO Guwahati	24	0	0	24



<b>S. No.</b>	<b>DDO's</b>	<b>Paras Outstanding as on 01.04.2016</b>	<b>Paras added during 2016-17</b>	<b>Paras settled during 2016-17</b>	<b>Paras Outstanding as on 31.03.2017</b>
12	PO Hyderabad	16	0	0	16
13	PO Jaipur	34	0	0	34
14	PO Jalandhar	8	7	12	3
15	PO Jammu	2	18	14	6
16	RPO Kolkata	32	0	0	32
17	PO Kozhikode	5	15	4	16
18	PO Lucknow	65	0	0	65
19	RPO Mumbai	57	23	0	80
20	PO Nagpur	17	12	16	13
21	RPO Delhi	32	0	0	32
22	RPO Patna	30	9	22	17
23	PO Pune	27	0	0	27
24	PO Mallapuram	12	11	12	11
25	PO Trivandrum	19	0	9	10
26	PO Triuchirapalli	31	12	0	43
27	PO Visakhapatnam	19	0	8	11
28	PO Srinagar	13	0	2	11
29	PO Thane	14	14	2	26
30	PO Shimla	16	0	1	15
31	PO Madurai	23	0	0	23
32	PO Surat	8	19	7	20
33	PO Amritsar	12	0	0	12
34	PO Dehradun	3	12	2	13
35	PO Coimbatore	0	0	0	0
36	PO Ranchi	13	0	0	13
37	PO Raipur	0	12	0	12
38	MEA Hostel Old	24	6	0	30
39	MEA Hostel New	20	7	7	20
40	PB Section	6	0	0	6
41	PC Section	9	0	0	9
42	PD Section	4	0	0	4

<b>S. No.</b>	<b>DDO's</b>	<b>Paras Outstanding as on 01.04.2016</b>	<b>Paras added during 2016-17</b>	<b>Paras settled during 2016-17</b>	<b>Paras Outstanding as on 31.03.2017</b>
43	PE Section	6	0	0	6
44	PF Section	7	0	0	7
45	PG Section	2	0	0	2
46	Cash-I, II,III,IV,V (All Cash Section)	57	0	6	51
47	ICCR	17	15	12	20
48	SE-I	25	0	0	25
49	SE-II	17	0	0	17
50	SE-III	11	0	0	11
51	MEA Canteen (PH)	15	0	0	15
52	Entitlement Section	15	0	0	15
53	General Hospitality	17	9	0	26
54	Toshakahan Cell	1	0	0	1
55	TA Cell	3	0	0	3
56	FSI	34	0	0	34
57	RIS	18	0	0	18
58	Pr. CCA Office	53	0	0	53
59	XP Division	17	0	0	17
60	MEA Canteen (JNB)	21	0	0	21
61	OD Art Cell	0	0	0	0
62	Protocol Division (Hyderabad House)	4	0	0	4
63	L & T Division	2	0	0	2
64	Special Purchase-I	2	0	0	2
65	FE Section	5	0	0	5
66	PA-II Section	7	0	0	7
67	EG & IT	8	0	0	8
68	Travel & General	11	0	0	11

S. No.	DDO's	Paras Outstanding as on 01.04.2016	Paras added during 2016-17	Paras settled during 2016-17	Paras Outstanding as on 31.03.2017
69	MEA Canteen (SB)	19	0	0	19
70	Transport Cell	20	0	0	20
71	Public Diplomacy	7	10	7	10
72	Legal & Treaty	2	0	0	2
73	ICWA	17	17	31	3
74	Nalanda University	11	0	0	11
75	BS Kolkata	35	10	36	9
76	HCI Mumbai	2	18	0	20
77	CPV Division	12	0	0	12
78	Property I &II	5	0	0	5
	<b>Total (A)</b>	<b>1396</b>	<b>338</b>	<b>354</b>	<b>1380</b>

### **B. Outside India**

S. No.	Missions/DDO's	Outstanding as on 01.04.2016	Added during 2016-17	Settled during 2016-17	Outstanding at the end of 31.03.2017
1	Abidjan	34	0	0	34
2	Abu Dhabi	8	0	0	8
3	Accra	39	0	0	39
4	Addis Ababa	18	0	0	18
5	Algiers	2	0	0	2
6	Amman	10	0	0	10
7	Ankara	8	0	0	8
8	Antananarivo	17	0	0	17
9	Ashgabat	2	0	0	2
10	Astana	4	0	0	4
11	Athens	32	0	0	32
12	Baghdad	9	0	0	9
13	Bahrain	0	0	0	0
14	Baku	0	0	0	0
15	Bandar Abbas	10	0	0	10
16	Bangkok	29	0	0	29
17	Beijing	34	0	21	13
18	Beirut	19	0	0	19

<b>S. No.</b>	<b>Missions/DDO's</b>	<b>Outstanding as on 01.04.2016</b>	<b>Added during 2016-17</b>	<b>Settled during 2016-17</b>	<b>Outstanding at the end of 31.03.2017</b>
19	Berlin	0	0	0	0
20	Bogota	0	0	0	0
21	Bishkek	12	0	0	12
22	Brasilia	0	0	0	0
23	Bratislava	11	0	0	11
24	Brunei	13	0	0	13
25	Brussels	8	0	0	8
26	Buenos Aires	0	0	0	0
27	Cairo	0	0	0	0
28	Canberra	56	0	0	56
29	Cape town	19	0	1	18
30	Chiang mai	10	0	0	10
31	Chittagong	4	0	0	4
32	Colombo	10	0	0	10
33	Dhaka	17	0	0	17
34	Dakar	12	0	0	12
35	Damascus	9	0	0	9
36	Dar-e-Salam	11	0	0	11
37	Doha	6	0	0	6
38	Dubai	17	0	0	17
39	Durban	27	0	0	27
40	Dushanbe	5	0	0	5
41	Gaborone	38	0	0	38
42	Gaza	4	0	0	4
43	Georgetown	0	0	0	0
44	Hanoi	31	0	0	31
45	Harare	23	0	0	23
46	Ho-chi-minh city	4	0	0	4
47	Hong Kong	8	0	0	8
48	Istanbul	1	0	0	1
49	Jakarta	7	0	0	7
50	Jeddah	3	0	0	3
51	Johannesburg	46	0	0	46
52	Kampala	61	0	0	61
53	Kandy	1	0	0	1
54	Kathmandu	16	0	0	16
55	Khartoum(Juba)	44	0	0	44
56	Kiev	21	0	0	21
57	Kualalumpur	57	0	0	57

S. No.	Missions/DDO's	Outstanding as on 01.04.2016	Added during 2016-17	Settled during 2016-17	Outstanding at the end of 31.03.2017
58	Kuwait	4	0	0	4
59	Lagos	15	0	0	15
60	Lima	0	0	0	0
61	Luanda	16	0	0	16
62	Lusaka	19	0	0	19
63	Mahe	22	0	0	22
64	Male	2	0	0	2
65	Malta	(Mission Closed)			
66	Manila	24	0	0	24
67	Mandalay	3	0	0	3
68	Maputo	26	0	0	26
69	Medan	1	0	0	1
70	Moscow	0	31	0	31
71	Muscat	1	0	0	1
72	Nairobi	63	0	0	63
73	Niamey	27	0	0	27
74	Nicosia	7	0	0	7
75	Osaka-Kobe	19	0	0	19
76	Ouagadougou	(Mission Closed)			
77	Phnom Penh	4	0	0	4
78	Phuntsholing	2	0	0	2
79	Port Louis	21	0	0	21
80	Port Moresby	4	0	0	4
81	Pretoria	43	0	0	43
82	Pyongyang	0	0	0	0
83	Rabat	28	0	0	28
84	Rajshahi	16	0	0	16
85	Riyadh	6	0	0	6
86	Rome	0	0	0	0
87	Sana	8	0	0	8
88	Seoul	20	0	0	20
89	Shanghai	5	0	0	5
90	Shiraz	3	0	0	3
91	Singapore	8	0	0	8
92	Suva	10	0	0	10
93	Sydney	41	0	0	41
94	Stockholm	7	0	0	7
95	Tashkent	10	0	0	10
96	Tehran	10	0	0	10

<b>S. No.</b>	<b>Missions/DDO's</b>	<b>Outstanding as on 01.04.2016</b>	<b>Added during 2016-17</b>	<b>Settled during 2016-17</b>	<b>Outstanding at the end of 31.03.2017</b>
97	Tel Aviv	11	0	0	11
98	Thimpu	15	0	0	15
99	Tokyo	14	0	0	14
100	Tripoli	27	0	0	27
101	Tunis	11	0	0	11
102	Ulaan Baatar	2	0	0	2
103	Vientiane	29	0	10	19
104	Washington	8	0	0	8
105	Wellington	26	0	0	26
106	Windhoek	5	0	0	5
107	Yangon	1	0	0	1
108	Yerevan	6	0	0	6
109	Zagreb	0	0	0	0
110	Zahidan	35	0	10	25
111	Zanzibar	6	0	0	6
112	San Francisco	6	0	0	6
113	Bali	4	0	0	4
114	Chicago	18	0	0	18
115	New York	0	0	0	0
116	Sitwe	24	0	3	21
117	St. Petersburg	0	25	0	25
<b>Total</b>		<b>1630</b>	<b>56</b>	<b>45</b>	<b>1641</b>

## LIST OF ABBREVAIATIONS USED

CDDOs	Cheque-Drawing and Disbursing Officers
CGA	Controller General of Accounts
DDO	Drawing and Disbursing Officer
GPF	General Provident Fund
ICCR	Indian Council for Cultural Relations
LOC	Letter of Credit
PAO	Pay & Accounts Office
PPO	Pension Payment Order
PCCA	Principal Chief Controller of Accounts
Pr.A.O.	Principal Accounts Office
PSB	Public Sector Banks
RBI	Reserve Bank of India
PO/RPO	Passport Office / Regional Passport Office
SCT	Statement of Central Transactions